

SIGNALLING EQUIPMENT

WALL CASE 1P



**KELTEK** ELECTRONICS

**A Total Systems Capability**

APPROVAL NO. NS/2201/2/F/450637

SIGNALLING EQUIPMENT

WALL CASE 1P

KELTEK ELECTRONICS LTD

Pinnaclehill Industrial Estate,  
KELSO, Roxburghshire, TD5 8DW  
Telephone: (0573) 23601  
Telex: 727513

WARNING

THIS EQUIPMENT IS NOT EARTHED VIA EARTH WIRE ON MAINS CABLE.  
A SAFE EXTERNAL EARTH CONNECTION MUST BE MADE TO EARTH BLOCK  
ON METAL BASE PLATE USING AN ADEQUATELY RATED CONDUCTOR

All rights strictly reserved. Reproduction or issue to  
third parties in any form whatever is not permitted without  
written authority from the proprietor.

A member of the Cambridge Electronics Industries Group.

TABLE OF CONTENTS

SECTION	TITLE	PAGE
1	1.0 General Description	2
2	2.0 Layout	3
	2.1 Internal Wiring	4
	2.2 PSU Circuit Diagram	5
3	3.0 Installation Instructions	6
4	4.0 User Wiring Index	7
	4.1 AC15A SU 44B	8
	4.2 AC15C PBX END SU 53A DIST END SU 54A	9
	4.3 SSDC10 SU 45A	10
5	5.0 Ammendment Record	11

## 1.0 GENERAL DESCRIPTION

### Description

The case 1P for wall mounting on a detachable hinge bar is designed to package 1 62-type plug-in module of panel width up to 60mm (N=12) and to provide -50V from standard 50HZ mains.

### Application

Economical packaging providing a -50V power supply from AC mains for 1 62-type modules.

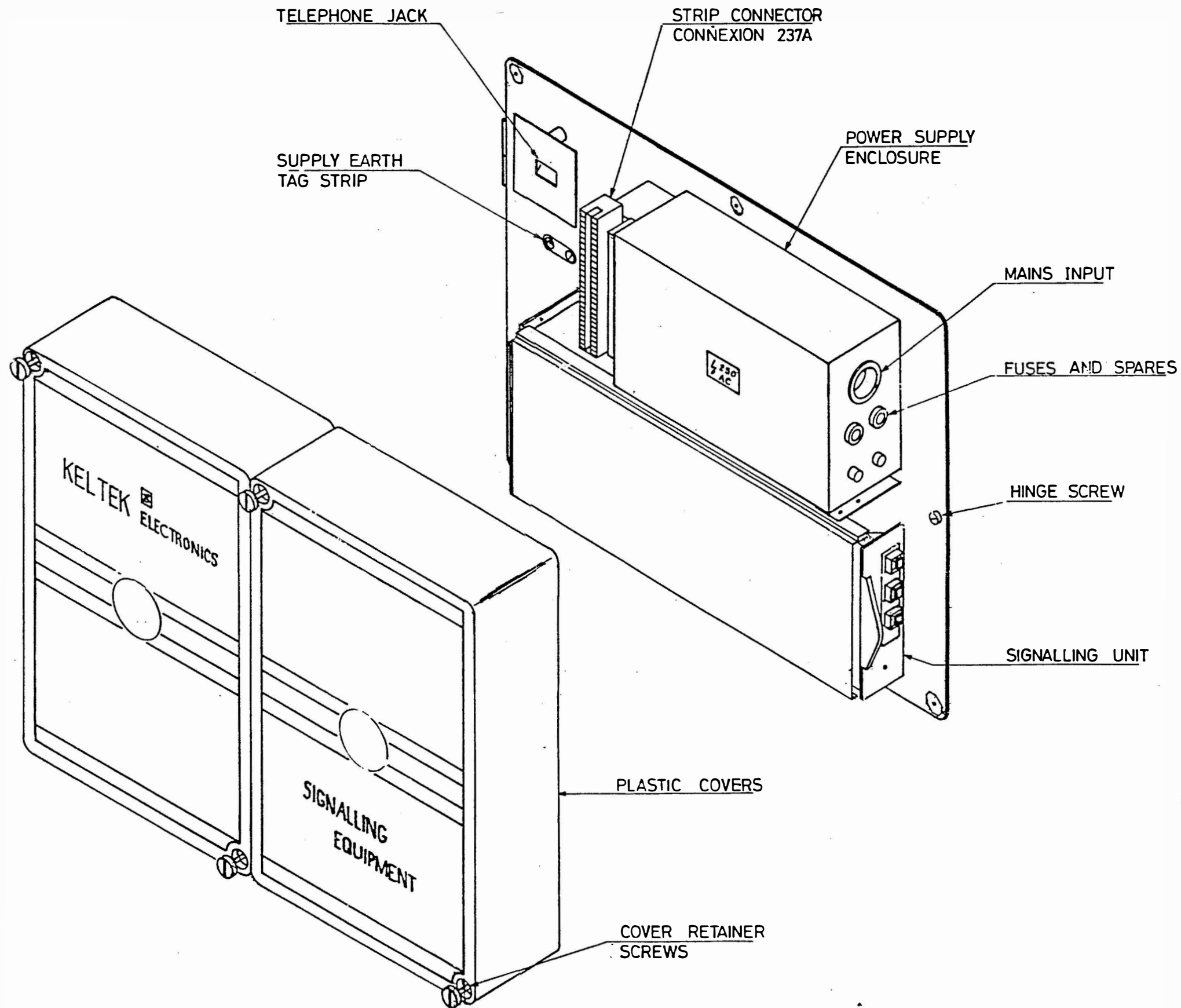
### Features

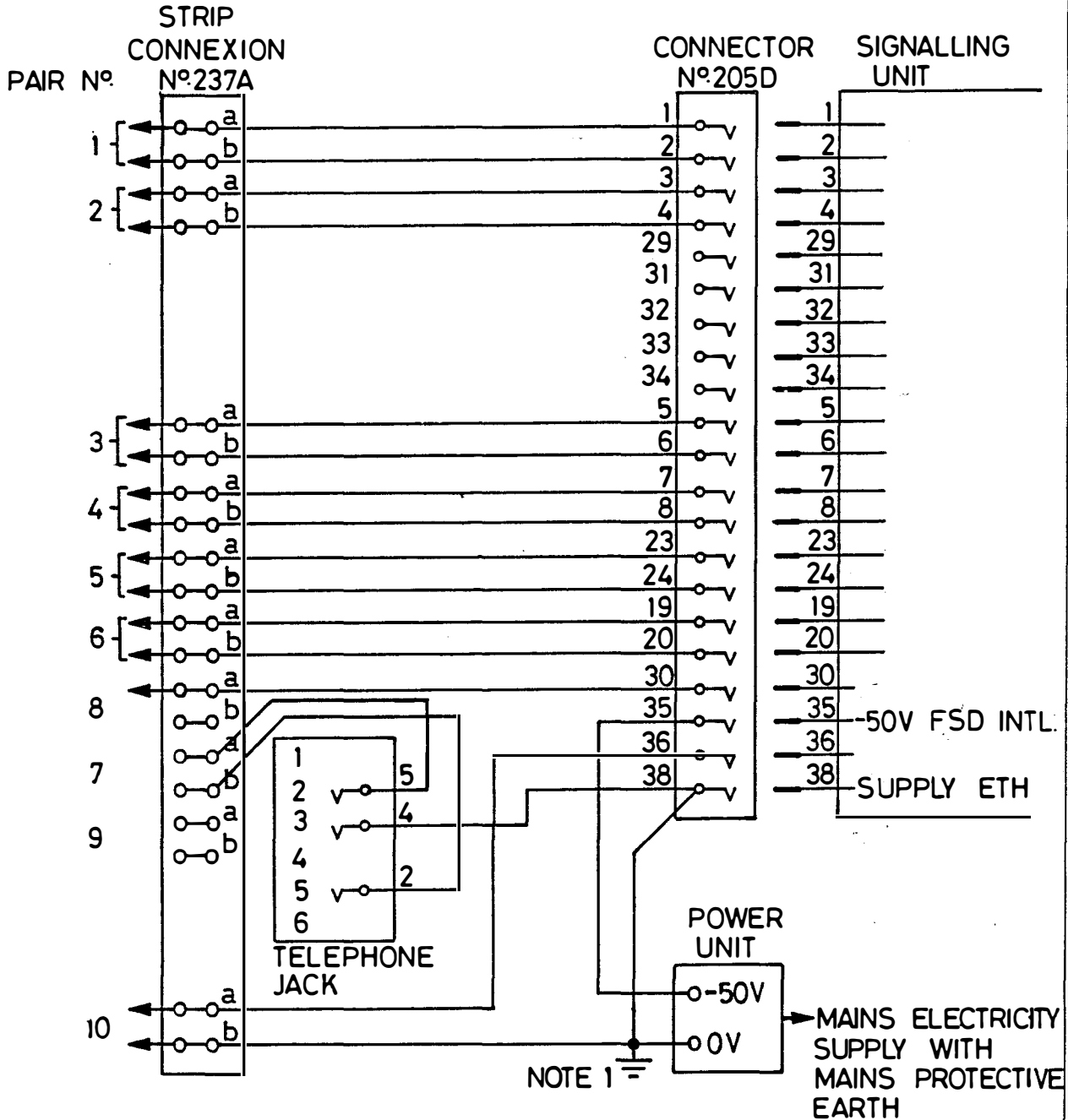
- \* Detachable hinge bar for easy wall mounting
- \* All metal construction for adequate screening
- \* Plastic outer covers of modern appearance
- \* Fast user wiring to connector 237A & tel jack
- \* Supplied with 2 metre length mains cable with 13 amp plug fitted
- \* British Telecom connection Approval
- \* Size: Width 420mm, Height 320mm, Depth 85mm
- \* Weight: 6.1kg

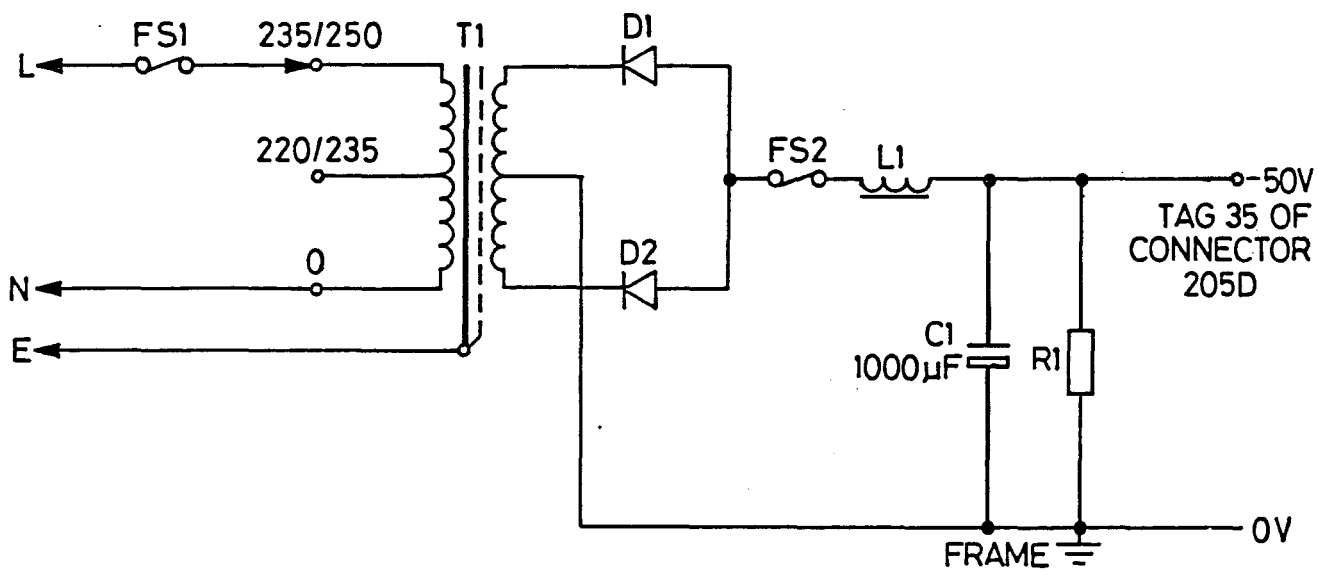


1P LAYOUT DIAGRAM

DRG. N°. KD00022700







FS1 = 500mA

FS2 = 630mA

All rights strictly reserved. Reproduction or issue to third parties in any form whatever is not permitted without written authority from the proprietor.



### 3.0 INSTALLATION INSTRUCTIONS

#### WARNING

THIS EQUIPMENT IS NOT EARTHED VIA EARTH WIRE ON MAINS CABLE. A SAFE EXTERNAL EARTH CONNECTION MUST BE MADE TO EARTH BLOCK ON METAL BASE PLATE USING AN ADEQUATELY RATED CONDUCTOR

1. Remove two part cover assembly (4 plastic retainers hold in place).
2. Unscrew hinge retaining screw and remove hinge.
3. Ensuring adequate clearance exists on LHS of unit for hinging, secure hinge assembly to wall.
4. Replace main assembly on hinge.
5. Referring to section 2.1. page 4, Connect Line RX and Line TX pairs to strip connection 237A.
6. Connect a safe external earth to earth block on metal base plate. Ensure an adequate rated conductor is used.

#### CAUTION STATIC SENSITIVE DEVICES

7. Select mains transformer primary tapping by using switch on front panel on mains PSU to suit local mains voltage.
8. Fit Signalling Unit in position.
9. Connect mains power cable.
10. After testing tighten retaining screw and replace covers.



## 4.0 USER WIRING INDEX

The following tables cover user wiring for:-

4.1	AC15A	-	Signalling Unit 44B	8
4.2	AC15C	-	PBX End SU 53A DIST End SU 54A	9
4.3	SSDC10	-	Signalling Unit 45A	10

## 4.1 AC15A - SU44B

USER WIRING SCHEDULE - (SKA AND SKB)

SIGNAL WIRING	
CIRCUIT 1	STRIP CONNEXION 237A
Line RX	1a & 1b
Line TX	2a & 2b
Office RX (or 2-wire)	3a & 3b
Office TX	4a & 4b
Office E	5a
Office M	5b
Signal Earth	10a *

\* Signal earth - normally commoned to 0V by linking 10a to 10b on strip connexion 237A.

4.2 AC15C - PBX END SU53A  
DIST END SU54A

USER WIRING SCHEDULE

4.2.1 SIGNALLING UNIT 53A PBX END

CIRCUIT 1	STRIP CONNEXION 237A
Line RX	1a & 1b
Line TX	2a & 2b
2 Wire	3a & 3b
Signal Earth	10a Note 1

4.2.2 SIGNALLING UNIT 54A DISTANT END

CIRCUIT 1	STRIP CONNEXION 237A
Line RX	1a & 1b
Line TX	2a & 2b
2 Wire	3a & 3b or Tele jack Note 2
External Ringing Input	10a Note 3

Note 1: SU53A Signal Earth - Normally comomoned to 0V by linking 10a and 10b on strip connexion 237A.

Note 2: When Telephone Jack is required link 3a to 7a and 3b to 7b on con 237A.

Note 3: SU54A External Ringing - If this facility is required change sig unit 54A links from A to B and connect external ring generator output to 10a on strip connexion 237A. See sig unit handbook for additional information.

## 4.3 SSDC10 - SIGNALLING UNIT 45A

USER WIRING SCHEDULE

4.3.1 4-Wire Office/4-Wire Line (Front Panel fig 1C fitted on SU45A).

CIRCUIT 1	STRIP CONNEXION 237A
Line RX	1a & 1b
Line TX	2a & 2b
Office RX	3a & 3b
Office TX	4a & 4b
Office E	5a
Office M	5b
Signal Earth	10a *

4.3.2 2-Wire Office/2-Wire Line (Front Panel fig 1B fitted on SU45A).

CIRCUIT 1	STRIP CONNEXION 237A
Line (2w)	1a & 1b
Office (2w)	3a & 3b
Office E	5a
Office M	5b
Signal Earth	10a *

Note \*: - Signal Earth - normally commoned to 0V by linking 10a & 10b on strip connexion 237A.

## 5.0 AMENDMENT RECORD

DATE	PAGE	AMMENDMENT	ISSUE
2/9/85	1	Addition of user wiring index	2
	4	Wiring for all sig units	2
	6	Changes to sections 5 & 6	2
	7-10	Additional wiring details	2
11/2/86	3	Change to Cardguide Mounting Brackets and Telephone Jack	2
	4	Change to Telephone Jack wiring	3
	9	Change to wiring notes on 54A	3

# **KELTEK... WORKS FOR YOU...**

**Keltek Electronics is one of Europe's leading sub-contract manufacturers of sophisticated electronic systems and assemblies.**

**Our resources have been developed to serve the needs of major suppliers of electronic equipment and systems. The markets served include the telecommunications, data communications, aerospace, computer and OEM industries.**

**Keltek has 3450 square metres of production and stores space with full anti-static protection. Computerised production control and direct product management enable effective contract control.**

**Our skills range from system design and development, through production engineering and control, planning, material procurement, electronic and mechanical assembly, to complete systems manufacture and fully automated test.**

**As a major Company within the CEI group and with a policy of continuing investment Keltek Electronics is able to guarantee its advancement into new technologies.**

**Our experience is gathered over 15 years in this business and we are confident that we can take YOUR problems and provide you with a quality product.**

**FOR FURTHER INFORMATION ON THIS SERVICE  
PLEASE CONTACT**