

# Private Manual Branch Exchange (PMBX 4)

August 1973

Descriptive  
Leaflet

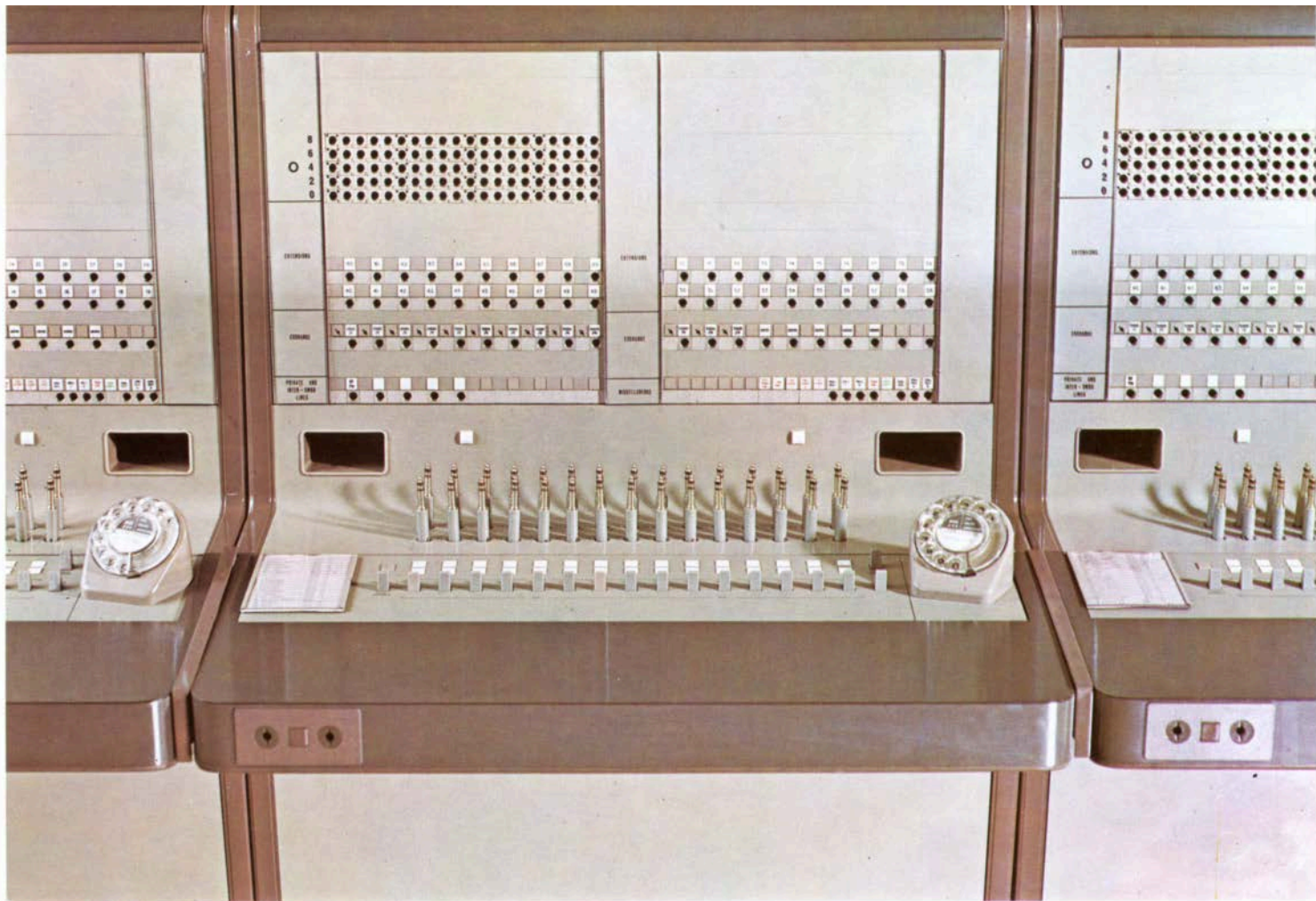
DLC 330

## Multiple Position

To meet the telephone needs of the large organisation in which all extension users require personal service, the PMBX 4 with two or more switchboard positions can be provided.







### Capacities

The number of operating positions required will depend on the needs of the organisation.

Two positions are generally required for up to 20 exchange lines and 80 extensions, and 3 or 4 positions for the maximum capacity of 40 exchange lines, 10 private or interswitchboard circuits, and 200 extensions.

The maximum number of positions that can be joined together to form a suite is four.

Your Telephone Sales Office will give advice on the most suitable installation.

### Description

Each exchange line, extension, private circuit and interswitchboard circuit has a calling lamp and answering jack. These can be arranged out of numerical sequence over the multiple positions to distribute the incoming calls evenly between the operators.

Additionally, as each position has two panels of jacks, which accommodate all extension circuits arranged in numerical sequence, each extension circuit is available to each operator.

Each position, when unstaffed, can be coupled to the position on its left.

Ten cord circuits are normally provided on each position to allow 10 calls to be connected at the same time. The number of cord circuits can be increased to a maximum of 15.

## Switchboard Facilities

All calls are signalled by lights and, if required, an alarm buzzer. The buzzer, which is set to low, medium or loud volume of sound, by the engineer who installs the switchboards, can be switched off by means of a key.

Visual indication of the next exchange line to be used for making calls can be provided. When provided, if the first line is engaged an illuminated arrow points to the next available line.

Automatic ringing is applied when a calling cord is plugged into an extension jack. Ringing continues until the extension answers.

Continuous ringing can be obtained on an answering cord if required.

An exchange call can be held by the operator while speaking to an extension, and the caller can be prevented from overhearing the conversation.

The operator can interrupt a call to ask if the extension will take another call.

Incoming exchange calls are prevented from ringing an extension when the PMBX operator has not been able to disconnect the cords from a previous exchange line call to that extension. A flashing signal draws the operator's attention to the new exchange line call.

In automatic exchange areas cyclometer-type meters can be provided:

Cord circuit trip meters to indicate units used on individual calls.

Exchange line totals meters to record total units used on individual exchange lines.

Trip or totals meters to record units used on predetermined extensions.

Totals meters are useful for checking the units used on a series of calls, but for technical reasons they are unsuitable for checking the total metered units which will appear on the telephone bill.

Night service is arranged by connecting exchange lines to selected extensions.

A grey lightweight headset is provided for each position. A twin socket on each position allows for an extra headset to be plugged in for training purposes.

Switchboard dials can be changed by the operator and a spare dial is provided for each installation.

## Extension Facilities

Each internal or external extension telephone has a press-button so that the operator can be recalled.

Extensions can be provided with dial telephones so that calls can be dialled direct when the extension is connected to an exchange line.

On an outgoing exchange line call, the line is released as soon as the extension handset is replaced.

Extension arrangements to plans 1, 1A, 2, 4, 9, 12A, 105, 105A, 107 and 107A can be provided on switchboard extensions. Telephones on extension arrangements plans 2, and 9, also the main telephones of extension plans 12A, 105, 105A, 107 and 107A are available in black, two tone grey or ivory.

Tablephones in two-tone grey, two-tone green, light ivory, topaz yellow, lacquer red, concord blue, or black can be provided on other extensions.

When wallphones are provided, the choice of colour is limited to two-tone grey, light ivory, or black.

Trimphones can be provided on extensions for a small additional rental. The telephone is available in grey, blue, or green; each is a combination of two tones, with the handset in the darker tone.

## General Information

The switchboards are finished in grey plastic laminate. The working surfaces and face equipment are in french grey, and the surrounding panels in elephant grey.

The switchboards are free standing and need about 900mm (3') clear space behind them for maintenance purposes. There should also be at least 900 mm (3') clearance to one side of the switchboards and 300mm (1') on the other, and there should be no obstruction of the space above the switchboards.

The dimensions of a single position are 730mm (2'4 $\frac{3}{4}$ ") wide, 850mm (2'9 $\frac{1}{2}$ ") deep and 1220mm (4') high, and it weighs approximately 205 kg (450 lb).

The equipment is mains-powered and works from a 3-pin switched socket outlet of at least 13-amp rating provided by the customer, except when the switchboard load exceeds 12 amps in which case a battery power supply is provided.

On a mains-powered installation, in the event of a mains failure, a restricted service is still possible. Exchange calls in progress remain connected, and the operator can still make and receive exchange calls.

Most of the equipment is contained inside the switchboard, but the power unit, or batteries if provided, and ringing and signalling units are separate. Power units, ringing and signalling units are usually wall-mounted in a convenient position near the switchboard. If many signalling units are necessary, the equipment can be floor standing.

The simplest installation for example requires a wall-space of approximately 750mm by 750mm (2'6" by 2'6"), and stands out about 300mm (1').

---

**Please note**

We do our best to supply our customers with the apparatus they ask for but we may have to provide apparatus which does not accord exactly with the descriptions and illustrations in this leaflet.

Rental and connexion charges are quoted in DLC 1 the preface sheet for section C descriptive leaflets.

**Your Telephone Sales Office will gladly supply any further information. The address and telephone number are shown in the preface of your telephone directory.**

---