

Key Callmaker

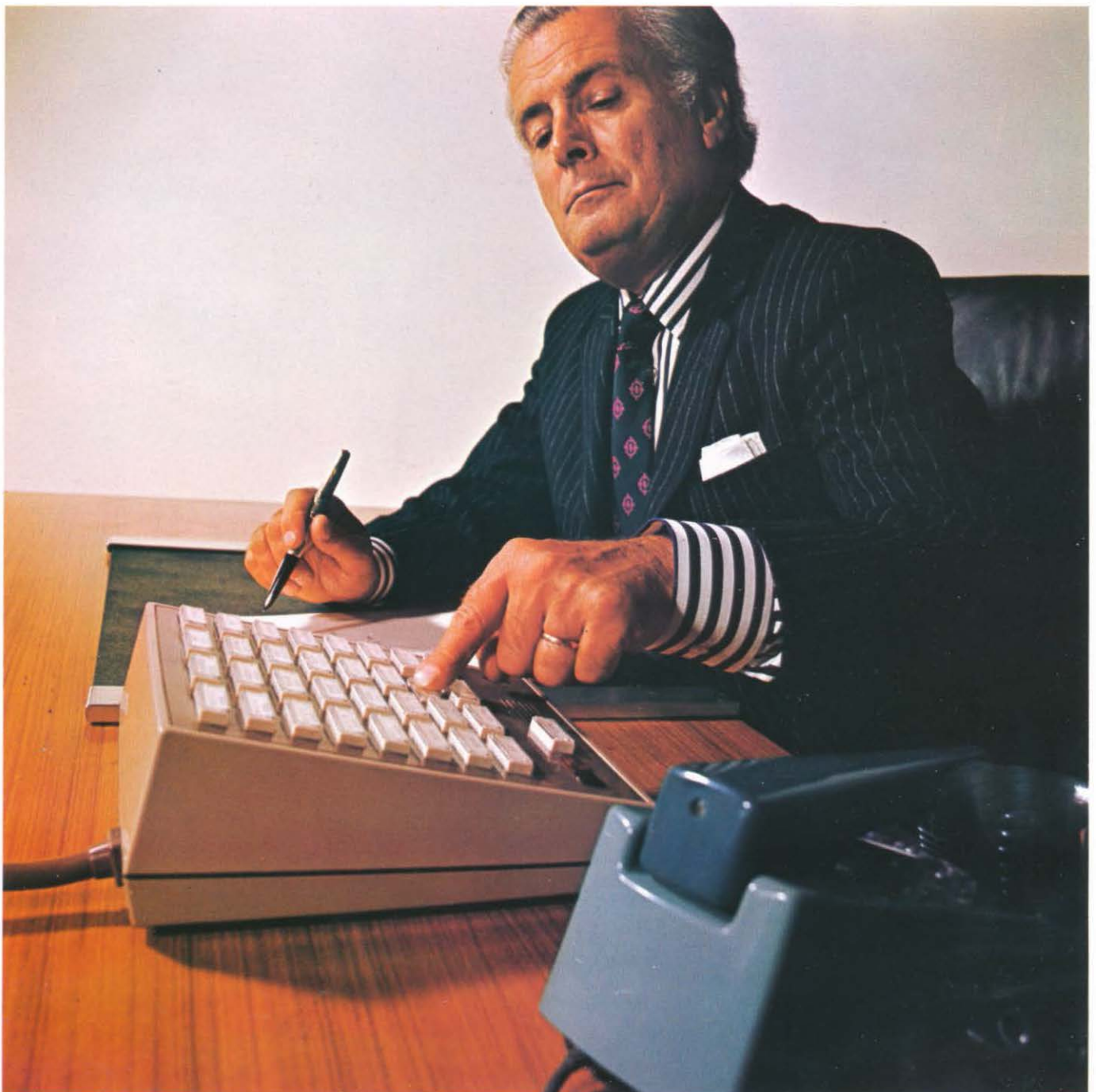
January 1973

Descriptive
Leaflet

DLE 563

The Key Callmaker dials out any one of 32 telephone numbers simply by pressing a selected button on a compact desk unit which stands by the telephone.

Numbers can be added, altered or removed when required.



Description

The equipment for the Key Callmaker is contained in two separate units; a desk unit placed beside the telephone, and a wall unit which can be remotely situated.

The desk unit contains 32 rectangular press buttons arranged in 8 rows of 4; two indicator lamps; a cancel button; a loudspeaker, and an On/Off switch. Each button has a transparent top under which a label can be inserted to show the name/and or telephone number of the correspondent. Labels are provided for this purpose.

How it operates

A call is made by pressing the required button. No dialling tone is heard, but a small loudspeaker enables the progress of the call to be followed. There is no need to lift the handset until the called person answers.

If the handset is not lifted within 60 seconds of the ringing tone being heard, the line is automatically disconnected. A call may be abandoned at any stage by pressing the "Cancel" button.

A green indicator lamp on the Callmaker glows when it is switched on. A red indicator lamp glows while the callmaker is calling a number and continues to glow until the call is answered or automatically disconnected.

Storing a number

Numbers are stored in the Key Callmaker by attaching flexible connectors to numbered tags in the wall unit. These numbers are set up initially by the telephone engineer when the Callmaker is installed. The customer can add, alter or remove numbers as necessary. Full instructions for doing this are provided separately. If the customer wishes, numbers may be changed by Post Office engineers, for a charge.



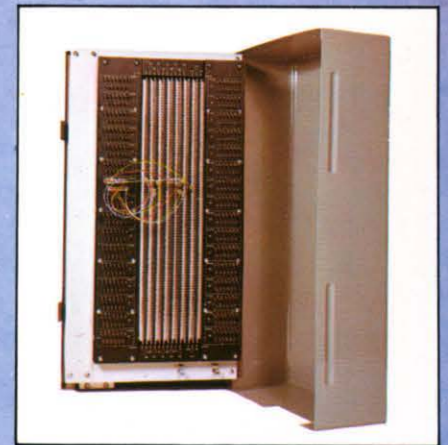
General information

The Key Callmaker can be used with most types of telephone from which calls can be dialled. The telephone can be used normally to dial numbers not stored in the Callmaker.

Any number that can be dialled direct in the United Kingdom, and most of those dialled abroad can be stored, including, for PABX customers, the access digit to obtain an exchange line.

The desk unit is two-tone grey; the base is french grey and the key panel elephant grey.

The Key Callmaker is powered by a wall-mounted mains unit in a grey metal case. A 3-pin socket outlet of at least 2-amp rating has to be provided by the customer.



Dimensions

Desk Unit 8" x 9" x 3½"
(203mm x 229mm x 89mm)

Wall Unit 18" x 10" x 4½"
(457mm x 254mm x 114mm)

Mains Unit 8" x 5½" x 3"
(203mm x 140mm x 76mm)

Other callmakers available

Card Callmaker

The Card Callmaker uses punched cards to dial the telephone number required. An unlimited number of cards can be prepared. (Detailed information available on Descriptive Leaflet DLE 562.)

Tape Callmaker

The Tape Callmaker automatically dials up to 400 telephone numbers stored on magnetic tape. (Detailed information available on Descriptive Leaflet DLE 561.)

Please note

We do our best to supply our customers with the apparatus they ask for but we may have to provide apparatus which does not accord exactly with the descriptions and illustrations in this leaflet.

Value Added Tax

From 1st April 1973 value added tax will be payable for telecommunications services and will be added to the total of charges on customers' bills.
Rental and connexion charges are quoted in DLE 1 the preface sheet for Section E descriptive leaflets.

Your Telephone Sales Office will gladly supply any further information. The address and telephone number are shown in the preface of your telephone directory.