

Telephones for businesses

Good communication improves business efficiency.

This leaflet outlines a wide range of telephone apparatus to assist you in getting the best use from your telephone.



Other apparatus

Trimphone

A lightweight table telephone which uses a tone-caller in place of the conventional bell can be provided for a small additional rental. A volume control allows the tone-caller to be adjusted from soft to loud. The dial which is luminous, has a clear plastic finger plate, and the handset rest serves as a carrying handle. Trimphones are available in blue, green and grey with the handset in a darker shade.

Trimphone



Answering Sets answer the telephone giving callers a pre-recorded message. Answering Set 1: for messages lasting up to 20 seconds. Answering Set 2: for messages up to 3 minutes. DLE 520
Answering Set 1



Coinboxes offer a way of improving your service to staff and customers by providing them with telephone facilities. They are widely used in hotels, shops, garages, blocks of flats etc. Users insert money in the coinbox when making a call. The renter takes the money from the box. Charges are raised on your quarterly telephone account. A rebate is allowed on all directly dialled calls and certain calls via the operator. DLE 530

Wall-mounted



Portable



Callmakers do the dialling for you.

There are two types:-
Card Callmakers which use a punched card to do the dialling. A box of 50 cards with indexed dividers is provided with each Callmaker.

Additional boxes of cards can be provided. Anyone obtaining orders by telephone each day may find it useful to keep the punched cards with their order sheets. DLE 562

Card callmaker



The Card callmaker can also be used on telex installations.



Tape Callmakers can store up to four hundred telephone numbers on magnetic tape. Any one of the recorded numbers can quickly be located to make a call automatically without dialling. Numbers can easily be added, altered or removed. DLE 561

Tape callmaker



Internal Telephone Systems are entirely separate from the public exchange system, and allow a group of people to contact one another quickly. They are available in three sizes of up to 6, 11, or 16 telephones, and are suitable for offices, factories, shops etc. DLF 650

Internal Telephone System

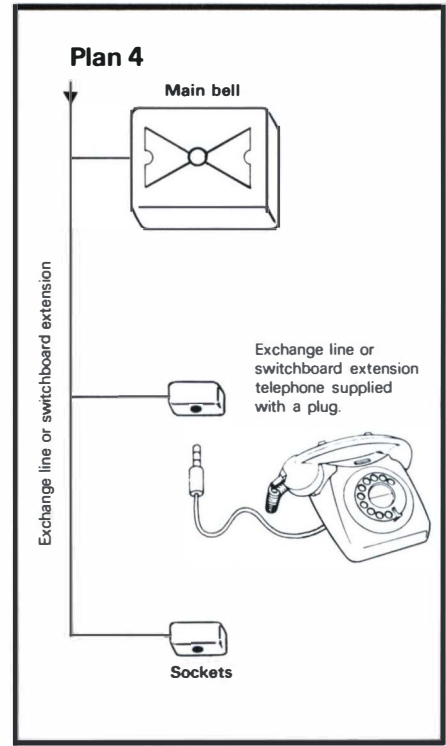
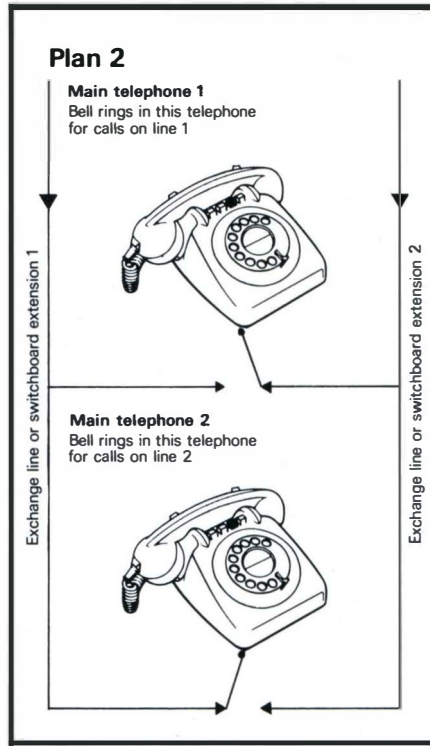
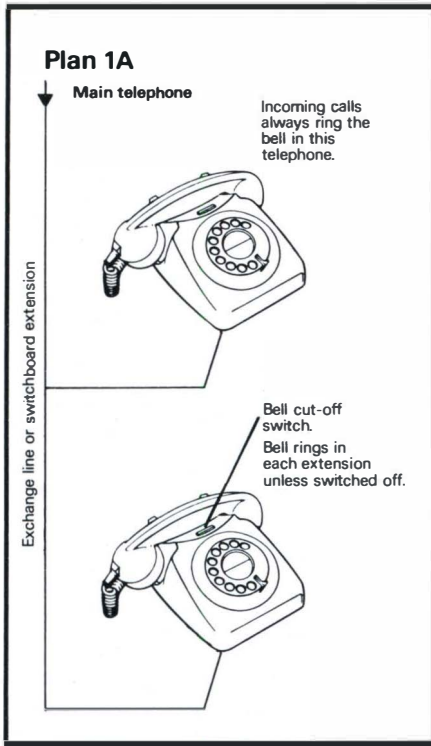


Loud Speaking Telephones are useful for anyone who wants both hands free during a call, or where several people wish to join in the conversation. To avoid a call being overheard it can be switched from the loudspeaker to the handset, and back again, whenever required. DLE 512

LST4



Telephone Extensions



Plans 1 and 1A The basic arrangement of these plans provides one extension telephone. Up to 5 extensions can be provided on one line so that it can be shared by a group of people, or can be used by one person from several points. Each telephone can make an exchange call direct. These plans are not designed for internal communication, but a call can be transferred from the main telephone of the Plan 1 to its extension. DLA 100

Plans 2 and 2A The basic arrangements of these plans enable a number of people to share the use of up to 3 exchange lines or PBX extensions. Facilities to enable the 5 exchange lines to be shared can be provided at extra cost. As these plans are not designed for internal communication – there is no signalling between telephones – they are best suited to open plan office working. DLA 101

Plan 4 enables you to make and receive calls at different points without having a separate telephone instrument at each one.

The basic Plan 4 arrangements provides 2 sockets and a separate main bell. The exchange line telephone is supplied with a plug by means of which it can be plugged into either of the 2 sockets. Both additional sockets and extra portable telephones can be provided at extra cost. DLA 100

Plan 12A



Plans 107 and 105 The Plan 107 allows two people to make and receive calls on one exchange line and to communicate with each other, and the Plan 105 does the same for three people. A switching unit is associated with the main telephone, and the instruments can be table or wallphones. This arrangement is useful to a small business that is conducted from more than one room. DLA 103

Plans 107A and 12A are suitable for those who have their calls filtered by a secretary, but who wants secrecy on their own telephone. In both arrangements there are bells or buzzers for calling the other telephone user, and the Plan 107A also provides for intercommunication between the main and extension telephones. DLA 103 and DLA 105

Plan 108 enables calls to two main telephones to be transferred to a third telephone, which also has the facility to make outgoing calls over either exchange line. This plan is not designed for internal communication. DLA 106

Keymasters 1 + 5, and 2 + 10. The Keymaster 1 + 5 provides press-button intercommunication for up to five telephones, and the telephones can also be used to make or receive calls over one exchange line.



The Keymaster 2 + 10 provides the same facilities for up to ten telephones and two exchange lines. Keymasters also have a conference facility, which enables some or all of the telephone users to hold a joint conversation. DLA 120 and DLA 122



Telephone-call Signalling Devices If you need a louder bell, an extra bell, or an extension lamp, a range of bells and lamps is available to supplement the normal telephone bell. DLE 570

Indoor or outdoor 2½" gongs



Speakersets are small loudspeaker units which amplify incoming speech sufficiently for it to be heard by a group of people. They are also useful for anyone wanting both hands free while waiting for a call to be answered, or when listening to a call. DLE 590 and DLE 591

Speakerset 2



Self Contained (SC) Keyphone This two-tone grey table telephone which has a keypad instead of the conventional rotary dial, can be provided at an additional rental.

The keypad is arranged in the internationally agreed layout for telephones.

In some situations customers may need to provide a power point.



Telex Service enables its customers to dial calls and then communicate in print. Within the United Kingdom calls can be made between telex installations at any time of the day or night. Calls can be made to telex customers all over the world. DLG 7

Telex



Switchboard 2 + 6 is the smallest of the table top switchboards with a capacity of two exchange lines and six extensions. For a growing business wishing to avoid an early change, a switchboard with a slightly larger capacity is available. DLC 300

Switchboard 2 + 6



Larger switchboards. Further information on larger switchboards, both manual and automatic, is contained in our DLC and DLD range of Descriptive Leaflets.

Subscriber Controlled Transfer of Telephone Calls is for the customer who when out or when not wishing to be disturbed by calls, requires incoming calls to be transferred to a different telephone number on the same telephone exchange. The transfer equipment can be brought into operation from the customer's own telephone without the assistance of the operator. The facility is available on most automatic exchanges, but for technical reasons it is not possible for some customers to be given the facility. DLB 200

Leaflets giving more details are available. Ask for those you would like to be sent when you phone, quoting the Descriptive Leaflet (DL) reference.

Please Note.

We do our best to supply our customers with the apparatus they ask for but we may have to provide apparatus which does not accord exactly with the descriptions and illustrations in this leaflet.

Your Telephone Sales Office will gladly supply any further or up-to-date information. The address and telephone numbers are shown in the preface of your telephone directory.