

The Monarch 120 Call Connect System

An advanced digital switching system designed to meet modern business needs through the 1980s.



Monarch 120 is an entirely new system which uses the latest in solid state technology, time division switching with stored program under microprocessor control. It offers an extensive range of facilities capable of satisfying the most demanding and discerning business user. Each installation is programmed to meet your particular needs subject, of course, to the overall capabilities of the system.

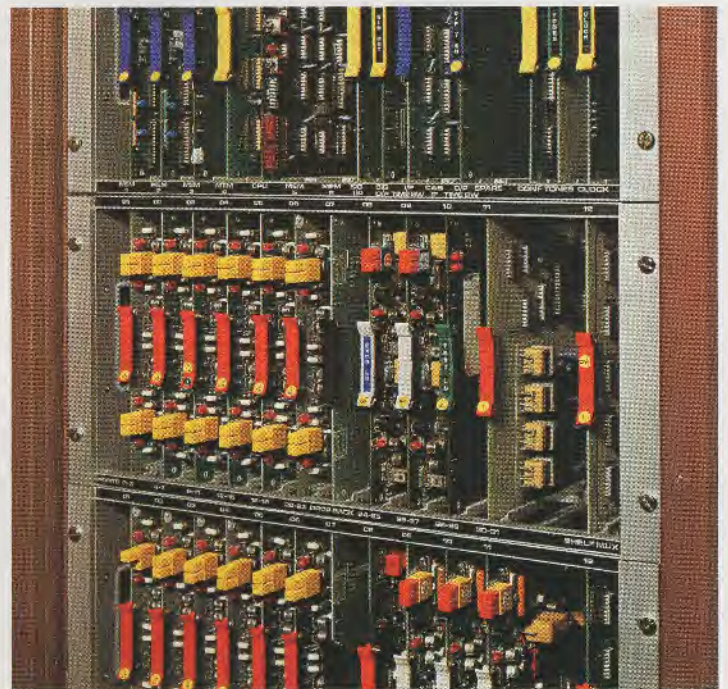
Space saving

Monarch 120 is much smaller than electro-mechanical systems of similar capacity. The central switching equipment, which is virtually silent in operation, is housed in a single cabinet designed to suit modern office surroundings.



Flexible

Monarch 120 is of modular construction and the use of slide-in units allows a high degree of flexibility. It may be equipped in units of 2 exchange lines, or 4 extensions, to provide installations varying in size from 24 to 120 extensions and up to about 30 exchange lines or private circuits. The maximum number of exchange lines provided will depend on how many private circuits are required.



HOW IT WORKS

HOW IT WORKS

Like a computer, Monarch needs a set of instructions—a program—to tell it what to do. The program is stored in the memory associated with the central processor and the system operates by referring to this program and carrying out the stored instructions. The stored program is built up in three levels. Firstly, the basic system instructions, common to all Monarch 120 systems, are programmed during manufacture. Once loaded they would not normally be changed. Next, each customer's requirements for exchange lines and the facilities required at particular extensions, are programmed in our workshops before the system is installed. Finally, extension users can program certain personal facilities, such as call diversions, themselves.

HOW IT

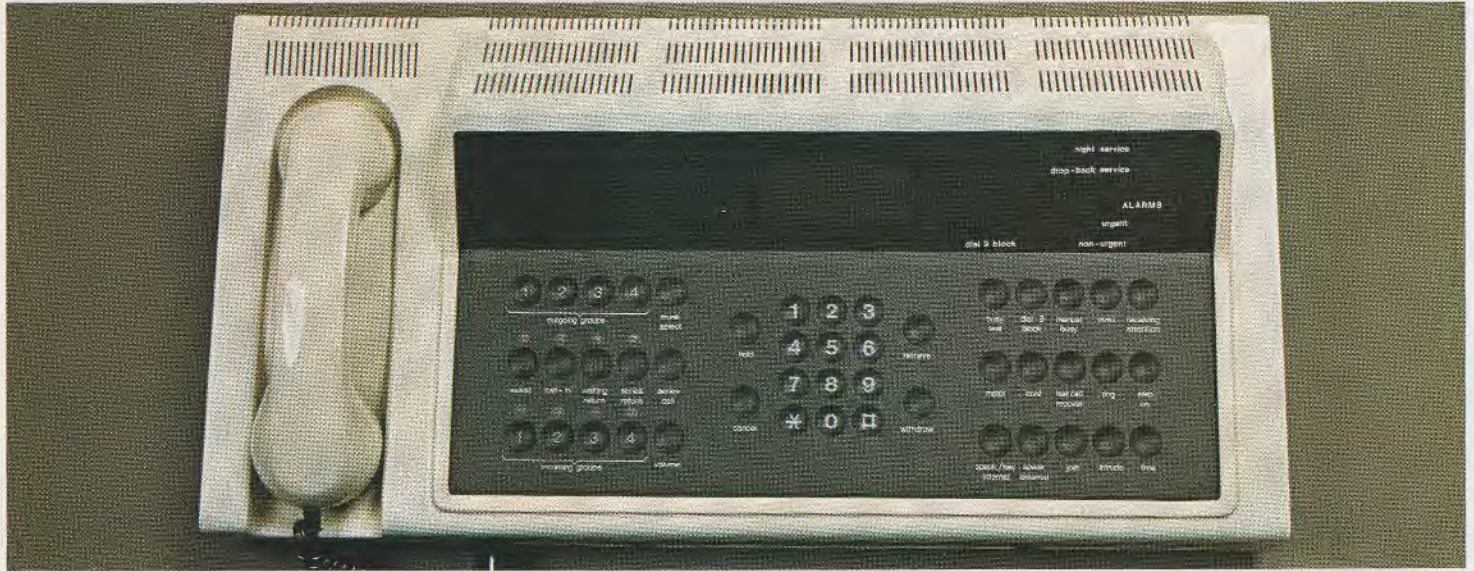
WORKS

HOW IT WORKS

IT WORKS

Operator's console

The operator's console has touch-sensitive keys for accurate operation, together with an alpha-numeric display which provides a wide range of information on call and system status. The console also employs selective answering which means that the operator can choose which types of call should have priority attention.



Maintenance

Monarch is a reliable system requiring no routine maintenance attention. It has a range of continuously run self-checks as part of its normal operation. If a fault occurs, audible and visual warnings are given to the operator, and information about the type of fault will be displayed on the operator's console. The systems in-built diagnostic features enable the majority of faults to be diagnosed and rectified by a change of slide-in unit. The benefits in terms of higher reliability, and quicker restoration of service, are considerable.



Facilities

A wide range of standard facilities is provided, with a choice of additional optional features which can be provided on a per system or per extension basis to meet your particular requirements. Tell us the facilities you need and we will enter them in the system for you. Among the standard facilities offered are:

Waiting Return

Calls to extensions, connected by the console, will automatically return to the console for supervision, if the extension is unanswered after 30 seconds.

Call Restriction

Any extension can be prevented from receiving incoming exchange line, inter-PBX and internal calls.

Call Barring

Any extension can be prevented from making outgoing exchange line, inter-PBX and internal calls.



Distinctive Ring

Distinctive types of ringing signals for external, internal and diverted calls are used so that different types of incoming call may be identified before the telephone is answered.

Diversion Of Calls

Monarch offers a number of call diversion facilities, any of which can be invoked by most extension users.

- diversion of all calls
 - diversion on busy
 - diversion on no reply
- Incoming calls can automatically be diverted to another extension.

Emergency Switching

In the event of a power failure, a fail-safe system known as "Drop Back" operates, and some or all exchange lines will automatically be switched to predetermined extensions.

Extension Group Hunting

Extensions can be arranged in hunt groups so that incoming calls to the group hunt to find a free extension. Two types of hunting can be provided: Cyclic Hunting ensures that calls are spread evenly over all the extensions in the group. Sequential Hunting concentrates calls on the early choice extensions. In addition to the Hunt Group number, each extension retains its own individual number so that it may be called direct if desired.

Enquiry Calls

An existing (incoming or outgoing) call may be placed in "Hold" and the extension user can then make an enquiry call to another Monarch extension, or via an exchange line or inter-PBX line.

Transfer Of Calls

Calls can be transferred by making an Enquiry call to a third party to confirm that the call can be accepted, and then hanging up. The call to be transferred may be incoming, or outgoing, and on an exchange line, inter-PBX or another Monarch extension.

Operator's console facilities

A number of standard facilities have been designed to help your operator. Among the facilities offered are:

- | | |
|----------------------------|---------------------|
| Alarm indication | Extension status |
| Call queueing | Hold/retrieve |
| Time and date display | Intrusion |
| Delayed answer supervision | Selective answering |
| Diversion override | |

The Monarch Call Connect System is being introduced in certain areas. Your local Telephone Sales Office will gladly supply any further information or details of any changes in the information in this leaflet since it went to print. The address, telex and telephone numbers are shown in the preface of your Telephone Directory.

British
TELECOM part of the Post Office

PH2904(9/80)

Printed by Camgate Litho 68 Willow Walk SE1

Please note: We do our best to supply our customers with the apparatus they ask for but we may have to provide apparatus which does not accord exactly with the descriptions, illustrations and shades of colours shown in this leaflet.

Technical summary

Extension Lines	Maximum 120.
Exchange Lines or PW	Maximum 32.
Switching	Time-switching with 256 ports.
Control	Stored program. Microprocessor controlled.
Extension Instruments	Standard rotary dial, SC or MF press-button telephones.
Power	240V 50Hz. Consumption (fully loaded) 800 Watts.
Equipment Cabinet	550mm Wide 600mm Deep 1730mm High. Weight 165kgs. (fully equipped).
Console	520mm Wide 270mm Deep 140mm High. Weight 7.5kgs.

