

NOTES:—

1. Telephone No.712...Mark 1 is fitted mainly in the L.T.R. North West Area, see Works Specification S(W)2072. Only 1000 were issued, and must not be re-installed.
2. Telephone No.712...Mark 2 supersedes Telephone No.712 Mark 1, see Works Specification S(W) 2091.
3. Terminals T5—T6 should not be strapped.
4. This Telephone may be fitted only as a single Instrument and on:—
 - (1) Direct Exchange Line—Exclusive and Shared Service.
 - (2) 2—wire P.B.X. Extensions—With or without recall.

On Extension Plans, Telephone 722 will be used, See Diagram N822.

P.O. TELECOMMS. HQRS. PAPER: Y CIRCULATION: GENERAL	ISSUE		
		A REDRAWN NEW FORMAT MADE YELLOW.	17. 1. 68.
		F.E.I. TROKE S1/1	30. 3. 65

TELEPHONE No.712...MARK 1 & 2

FIG.1. TELEPHONE No.712 MARK 1

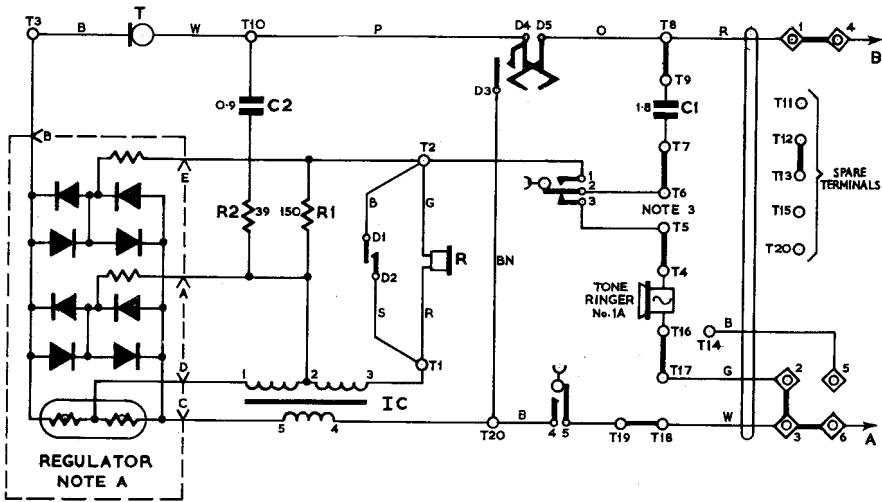
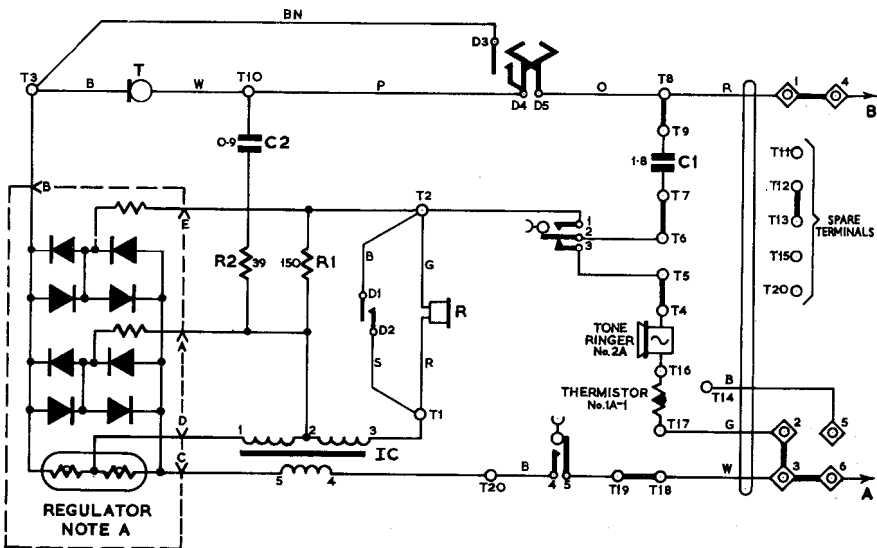


FIG.2. TELEPHONE No.712..MARK 2



NOTES:—

- A. The Regulator is made inoperative when it is reversed in the Jack, in that condition Points B, C and D are connected together.

FIG.3. AUTOMATIC SYSTEMS, SHARED SERVICE LINES
(SEPARATE METERING).

USING:—

WITHOUT EXTENSION BELL

Telephone No.712L MKII

Switch No.13A-1. SA

Thermistor No.1A-1. RY1

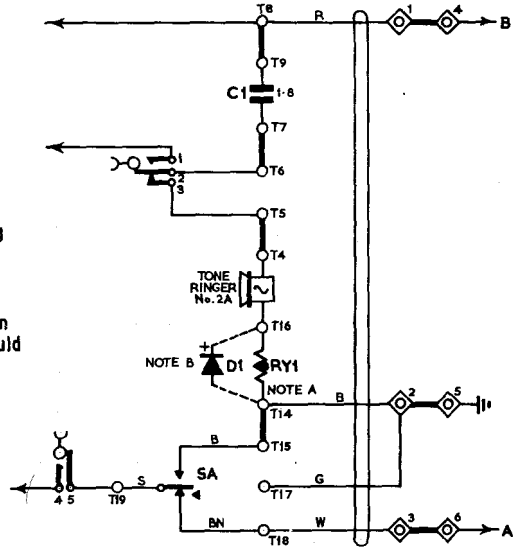
Valve Electronic CV425. D1

NOTES:—

A. Remove straps where necessary.
Transfer Thermistor No.1A-1
Connexion from T17 to T14.

B. In U.A.X. areas with Vibrator Ringing
provide and fit Valve Electronic
CV245.

C. Exchange Line Connexions are shown
for Station X. The Connexions should
be reversed for Station Y.



WITH EXTENSION BELL

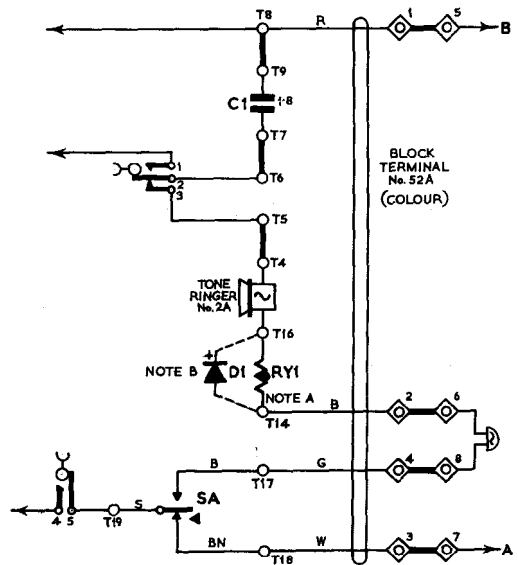
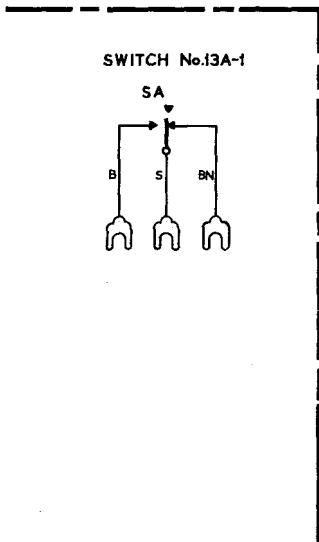
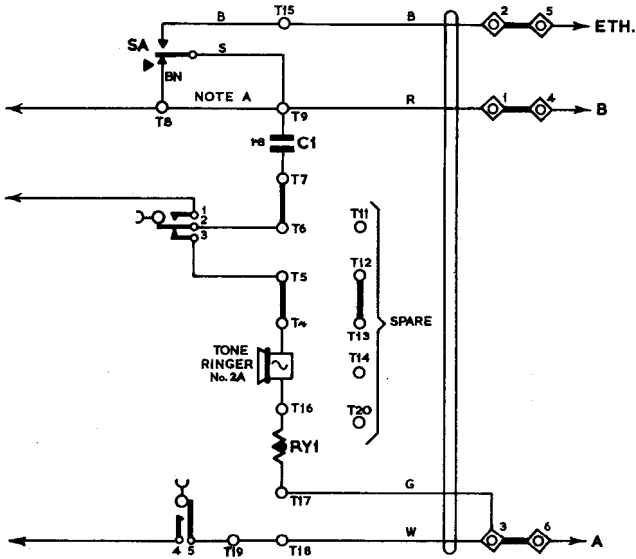


FIG. 4. AUTOMATIC SYSTEMS, 2-WIRE P.B.X. EXTENSIONS WITH RECALL
 USING:—

Telephone No.712L MKII
 Switch No.13A-1.....SA
 Thermistor No.1A-1....RY1



NOTES:—

- A. Retain strap T8-T9 for earth loop recall. Remove strap T8-T9 for one line earth, loop disconnected recall.