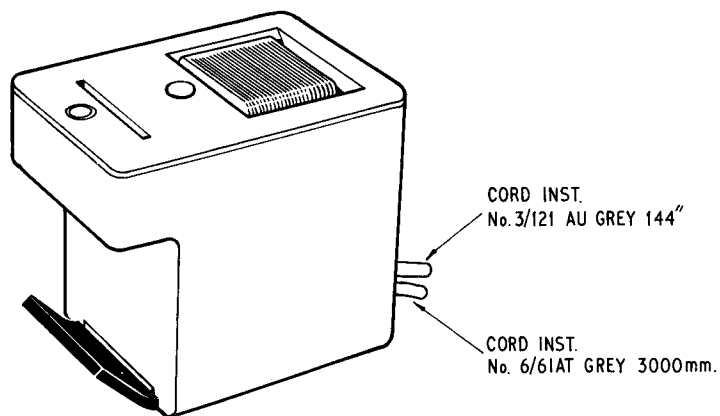


AUTODIAL No. 301A & 302A
CARD CALLMAKER FOR USE ON
INSTALLATIONS IN AUTOMATIC EXCHANGE AREAS.

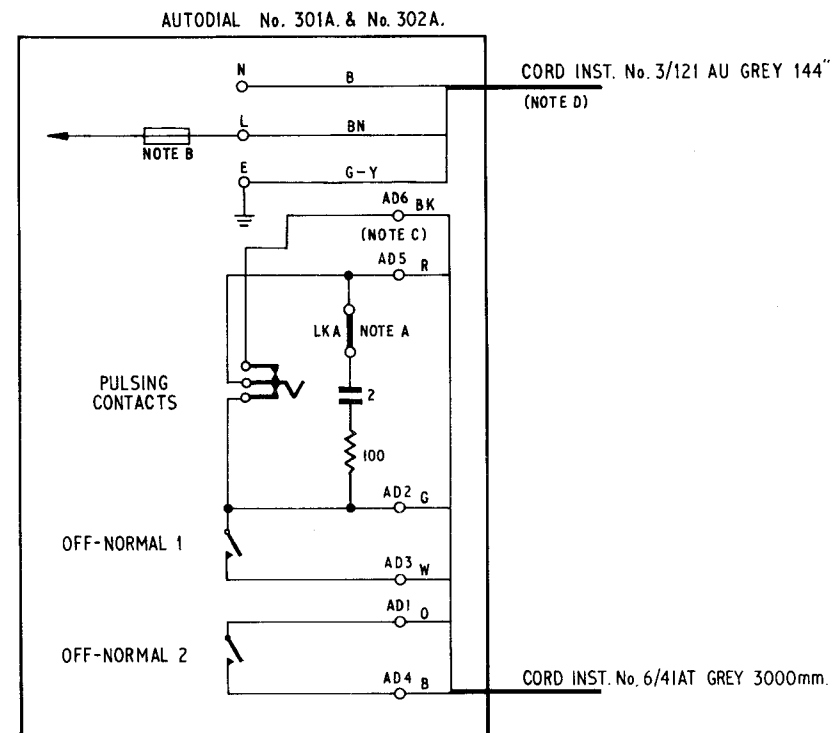
N2312
 PAGE 1-4
 ISSUE F

FIG. 1. AUTODIAL No. 301A & 302A SIMPLIFIED SCHEMATIC



CONTENTS

- FIG. 1. BLOCK SCHEMATIC.
- FIG. 2. CONNEXION TO LINE WITH SINGLE TELE.
- FIG. 3. CONNEXION TO AMPLIFIER & L/S No. 5.
- FIG. 4. CONNEXION TO MAIN OF EXTN. PLAN.
- FIG. 5. CONNEXION TO EXTN TELEPHONE OR TELEPHONE.
HAVING TWO OR MORE LINES.
- FIG. 6. CONNEXION TO TRIMPHONE EXTENSION (PARALLEL TELEPHONES)
- FIG. 7. CONNEXION TO TRIMPHONE EXTENSION (SWITCHED EXTENSION)
- FIG. 8. CONNEXION TO SWITCHBOARD DIALLING CIRCUIT



NOTES:-

- A. A strap is provided, the disconnection of which removes the spark quench from the circuit. The strap should only be removed if the spark quench already existing in the installation is used across the autodial pulsing contacts
- B. The fuse shown is a 160 mA. Anti-Surge for Autodial No. 301A and Fuse No 72/0-16 for Autodial No. 302A.
- C. AD 6 is not fitted on Autodials No. 301A which have a Cord Inst No. 5/37AA grey 72." On Autodial No. 302A AD6 and change over pulsing contacts are provided for telex use.
- D. This cord may be red (live), black (neutral) and green (earth).

| | | | | | |
|-------------------------------------|-------|---|--|-------------|----------|
| P.O. TELECOMMS HQRS | | | | | |
| PAPER:- W DISTN:- GENERAL | ISSUE | F | FIG. 8 WIRING AMENDED. MINOR AMENDMENTS. IFJ | ME/PD 1-1-3 | 15-6-81 |
| | | E | PAGE 4 NOTE ADDED. | | 17-7-75 |
| | | D | PAGE 1 NEW FORMAT. FIG 8 ADDED | TD 7-1-2 | 1-7-74 |
| | | C | AUTODIAL No. 302A ADDED P.A.B. | | 10-10-72 |

FIG. 2a. CONNEXION TO A LINE TERMINATED BY A SINGLE TELEPHONE.

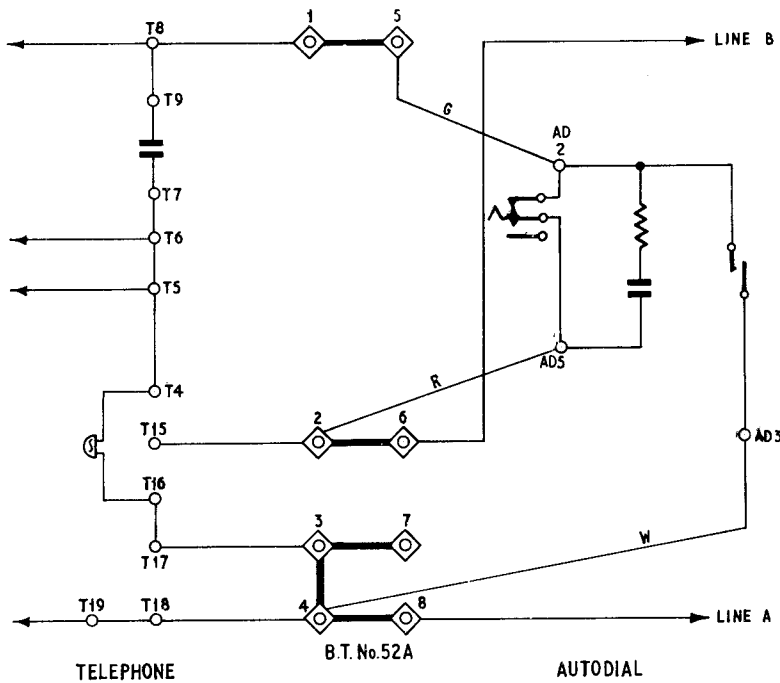


FIG. 3a. CONNEXION TO AMP. & L/S No.5 ON A LINE TERMINATED BY A SINGLE TELEPHONE.

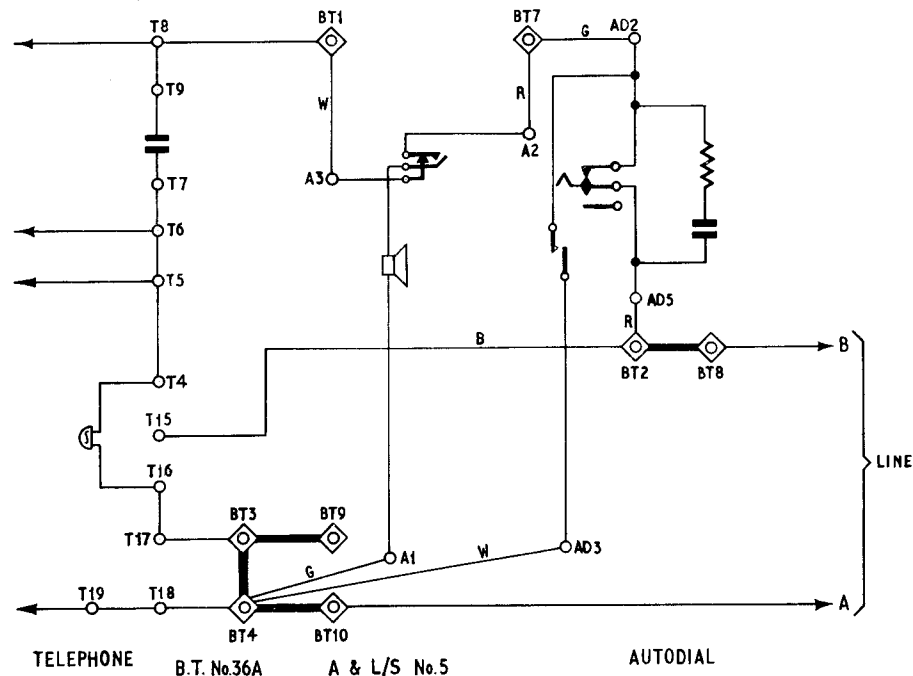
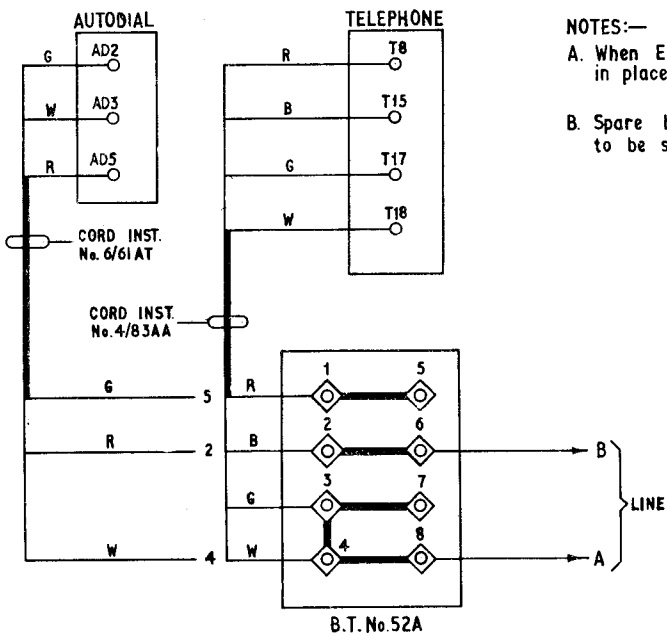


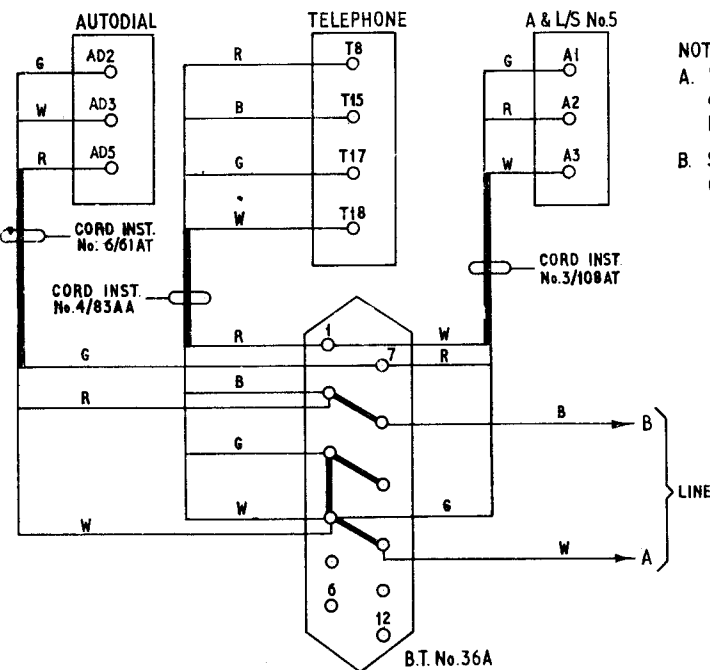
FIG. 2b. CABLING DIAGRAM.



NOTES:—

- A. When Extn. Bell is required connect in place of Strap at B.T. 3-4.
- B. Spare blue, orange & black Conductors to be sleeved.

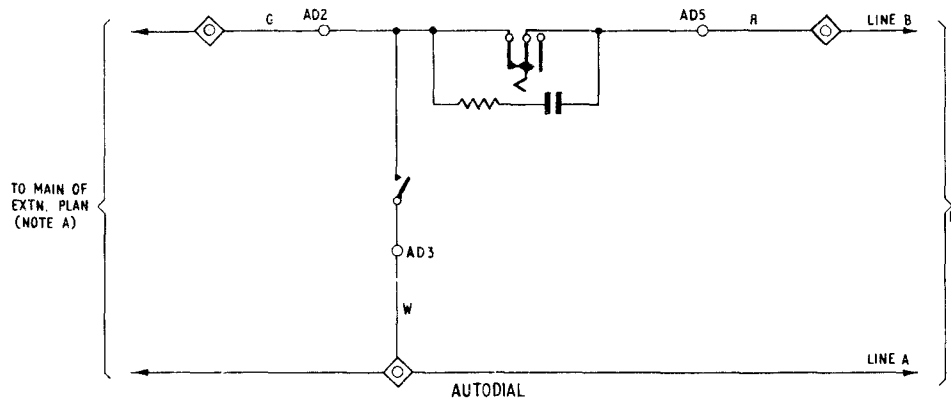
FIG. 3b. CABLING DIAGRAM.



NOTES:—

- A. When Extn. Bell is required connect in place of Strap at B.T. 3-4.
- B. Spare blue, orange & black Conductors to be sleeved.

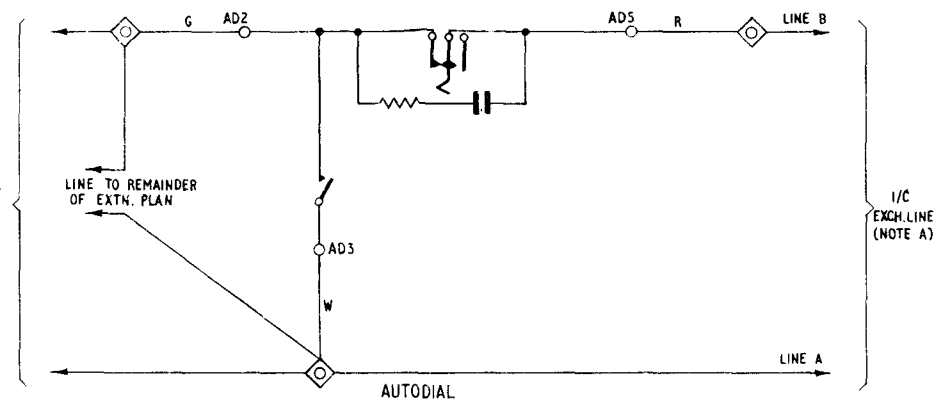
FIG. 4. CONNEXION TO THE MAIN OF AN EXTN. PLAN



NOTES:-

- A. Connect to Terminals to which line would have been connected to if Autodial were not required.
- B. Spare blue, orange & black Conductors to be sleeved.
- C. To fit Amplifier & L/S No.5, connect as shown in FIG. 3a.

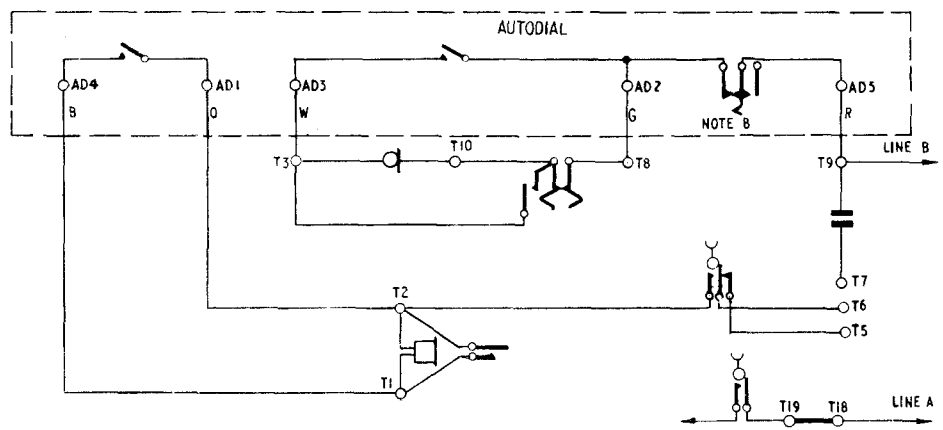
FIG. 6. CONNEXION TO A TRIMPHONE EXTENSION OF A PLAN NUMBER WITH PARALLEL TELEPHONES (e.g. PLAN 1A)



NOTES:-

- A. The Extn. Line must be run first to the Trimphone Extn. requiring the Autodial and then to the remainder of the Extn. Plan.
- B. Spare blue, orange & black Conductors to be sleeved.
- C. To fit Amplifier & L/S No.5, connect as shown in FIG. 3a.

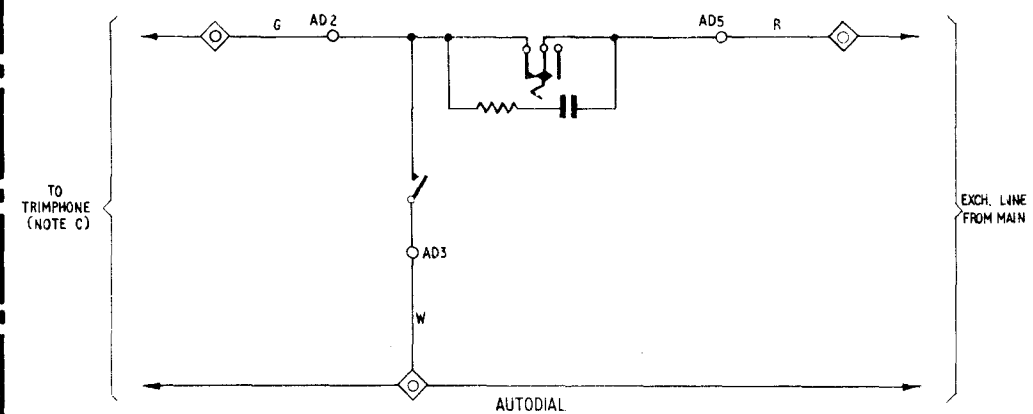
FIG. 5. CONNEXION TO ANY EXTENSION TELEPHONE (EXCLUDING TRIMPHONES) OR A TELEPHONE HAVING ACCESS TO TWO OR MORE LINES.



NOTES:-

- A. Access to the Telephone is via the Watch Receiver Hole, the Plan Set N625 Hole or by fitting a larger Line Card to the Telephone.
- B. Strap LKA (see FIG. 1) must be removed.
- C. On Telephones with recall, connect red of Autodial to spare Terminal and provide recall between the red of the Autodial to T9.
- D. Spare black conductor to be sleeved.

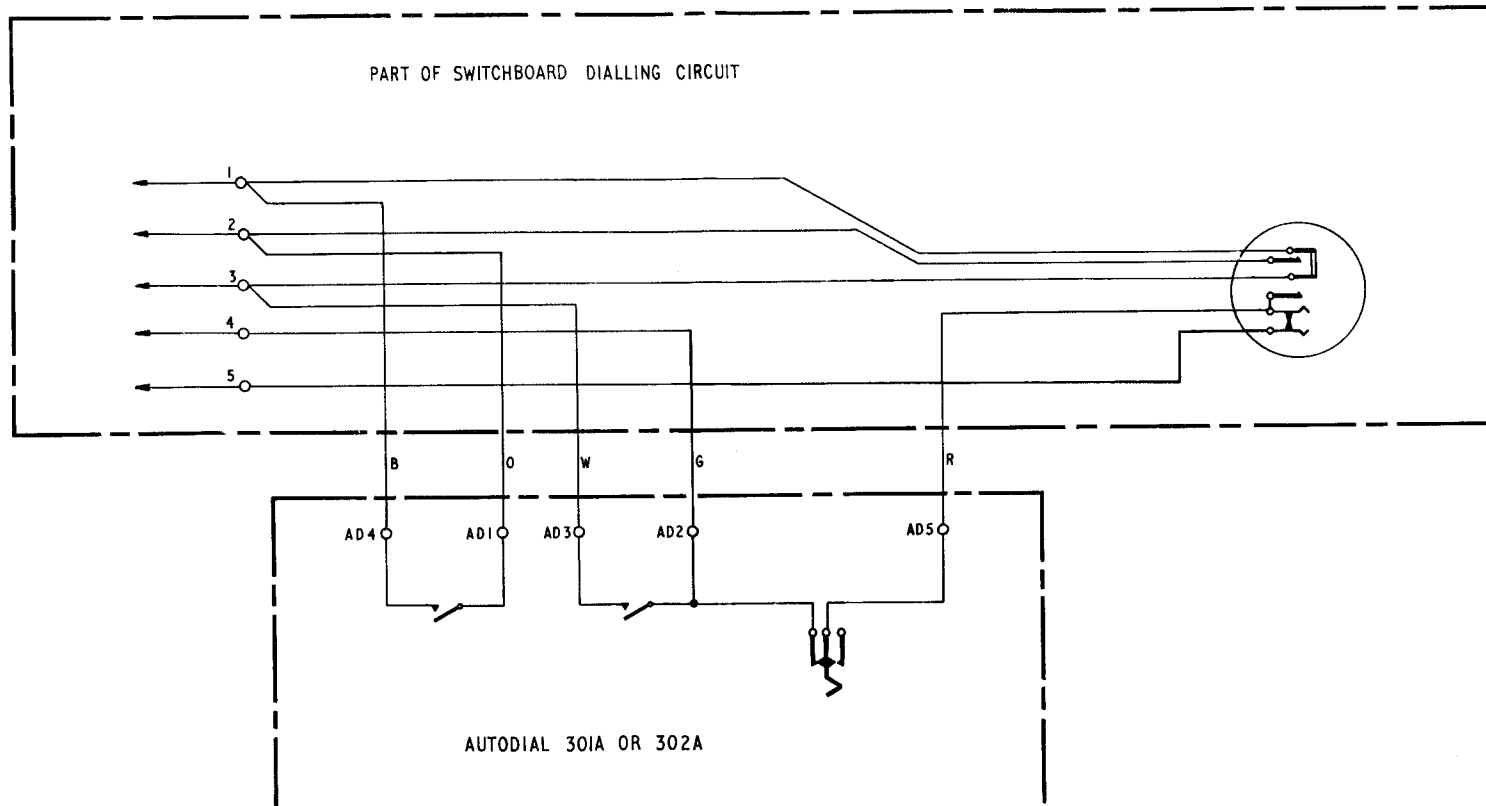
FIG. 7. CONNEXION TO A TRIMPHONE EXTENSION OF A PLAN NUMBER WITH SWITCHED EXTENSIONS (e.g. PLAN 107)



NOTES:-

- A. To fit Amplifier & L/S No.5, connect as shown in FIG. 3a.
- B. Spare blue, orange & black Conductors to be sleeved.
- C. Connect to Terminals to which line from main would have been connected if Autodial were not required.

FIG. 8.



NOTE:-

If the off-normal contacts are used to directly operate a relay in the switchboard circuit a Capacitor No.7801 must be connected across those contacts.