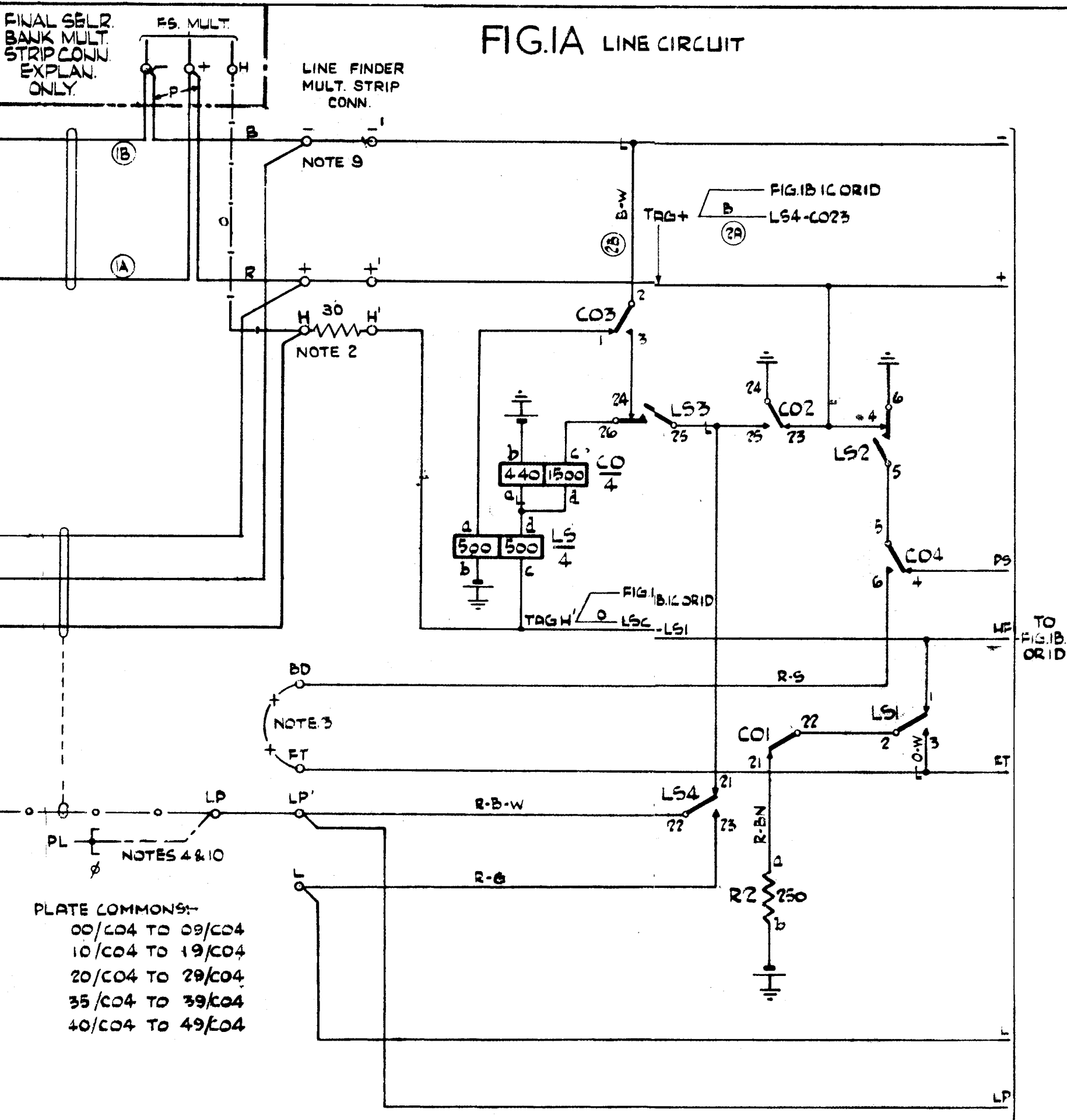
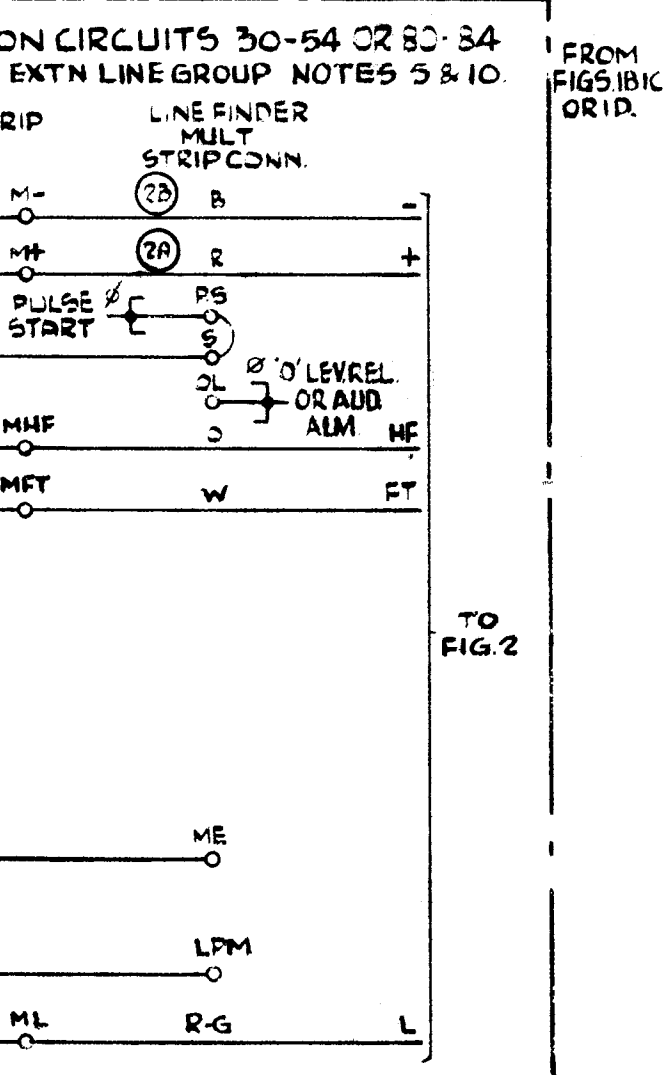
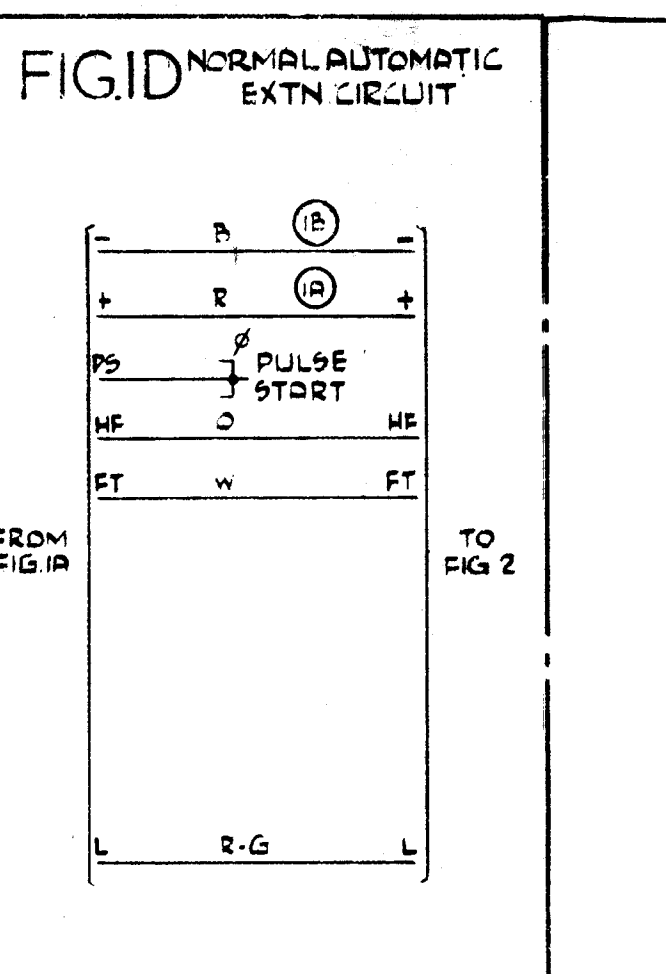
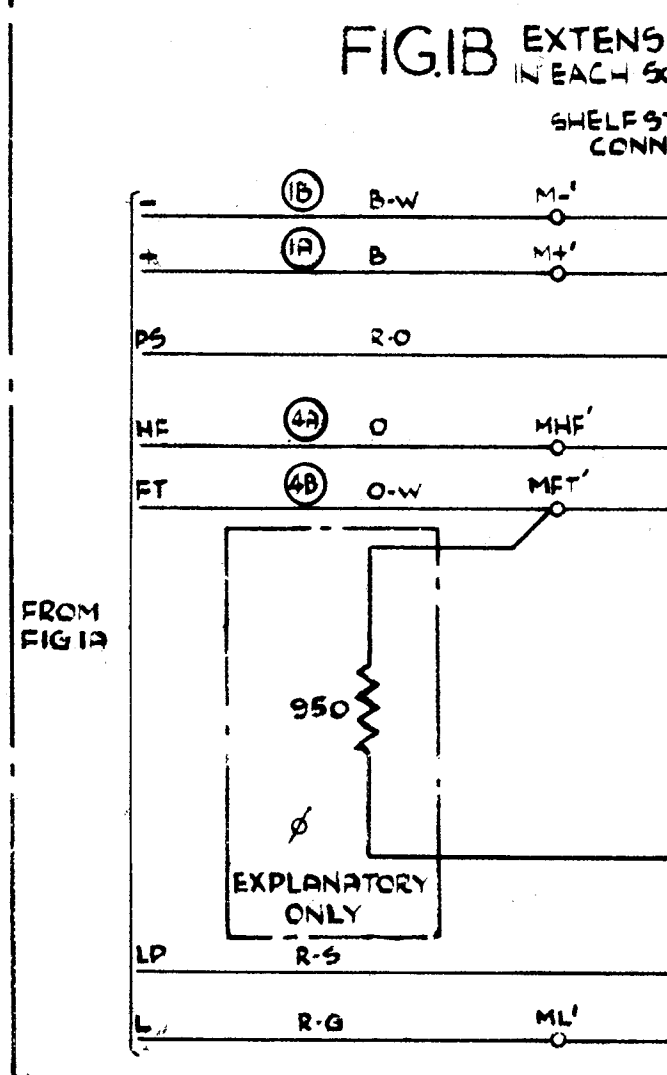
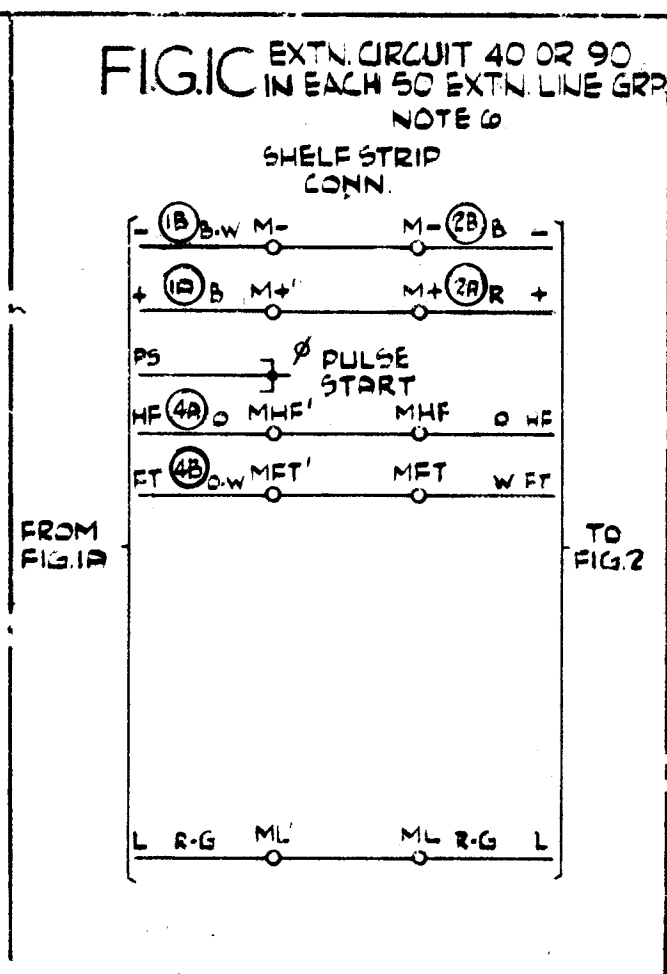


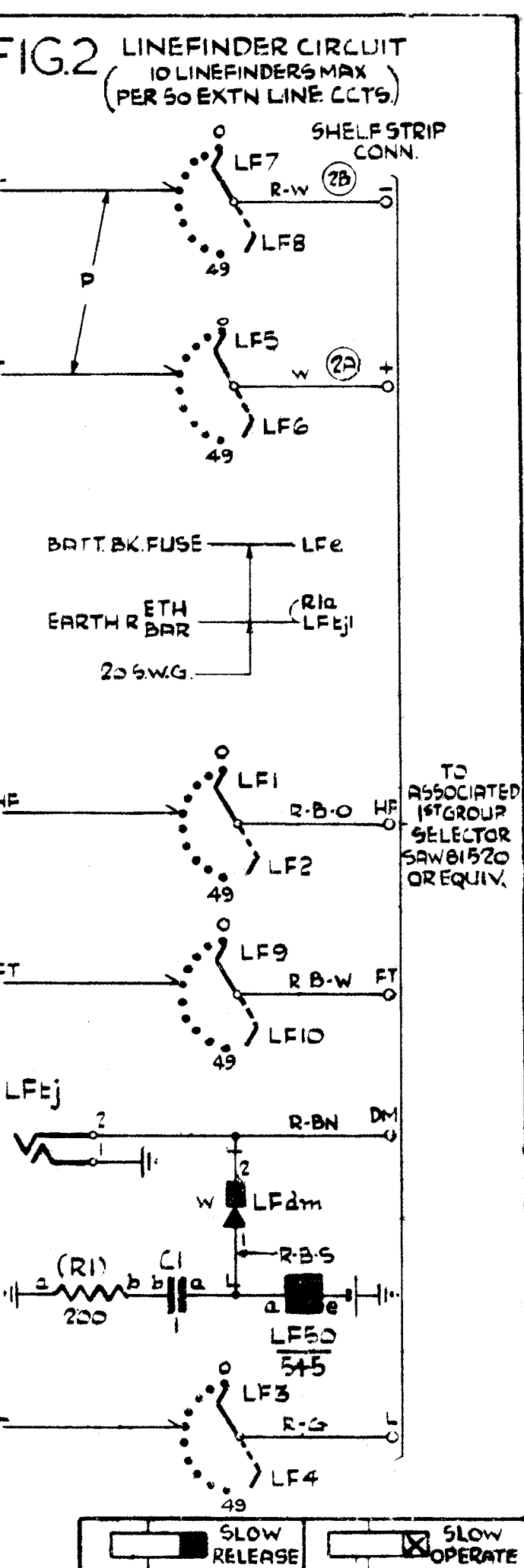
NOTES: 1. FUSE: - FIG.11-5A PER 10 CTS FIG.21-5A PER CCT.
 2. 30 OHM RESISTOR CONNECTED ACROSS H & H ON EXTENSIONS REQUIRING 'BREAK-IN' FACILITY.
 3. ON EXTENSIONS BARRED DIRECT ACCESS DISCONNECT STRAP BD-FT
 4. WHEN 0 LEVEL WORKING IS PROVIDED, INDIVIDUAL AUTO EXTENSION LAMPS ARE NOT FITTED ON THE MANUAL BOARD. LP TERMINALS ARE WIRED TO RELAY PL ON THE RACK (ONE PL RELAY PER 50 EXTENSION LINE GROUP)
 5. EXTENSION LINE CTS. 30-34 OR 80-84 MAY BE MOD FOR INTER-SWITCH BOARD LINE AND/OR MANUAL EXTENSION WORKING



5a. FOR INTER SWITCHBOARD LINE WORKING DISCONNECT STRAPS M-, M+, M+, M+, MHE, MHE, MET, MET, ML, ML, S, PS, AND WIRE INTER SWITCHBOARD RELAY SET LEADS - + HF FT L& PS TO TAGS M-, M+, MHE, MHE, ML & PS RESPECTIVELY
 b. FOR MANUAL EXTENSION WORKING WITH ACCESS FROM AUTO. DISCONNECT STRAPS S-PS BD-FT & MET-MET AND STRAP S-OL & ME-LPM.
 c. FOR MANUAL EXTENSION WORKING WITHOUT ACCESS FROM AUTO MODIFY AS IN b AND DISCONNECT WIRING AS SHOWN
 d. FOR MANUAL EXTENSION & INTER-SWITCHBOARD WORKING MODIFY AS IN (a) AND (b) OR (c).
 e. EXTENSION LINE CCT 40 IS WIRED VIA 1ST GROUP SELECTOR ROUTINE TEST JACK. DISCONNECT STRAPS M-, M-, M+, M+, MHE, MHE, MET, MET & ML, ML AND WIRE AS SHOWN ON COMMON SERVICES DIAGRAM.
 7. Ø FOR WIRING SEE ASSOC'D COMMON SERVICES DIAGRAM.
 8. ALL WIRING TO BE 25 SWG UNLESS OTHERWISE SPECIFIED LOCAL PLATE WIRING TO BE 23 OR 25 SWG BANK WIRING TO BE 25 SWG.
 9. WHEN DIRECT EXTENSION NIGHT SERVICE IS REQUIRED DISCONNECT STRAPS - TO - + TO + & H TO H' AND WIRE THUS TO INDICATED TAGS
 10. TO PROVIDE MANUAL EXTENSIONS WHEN 0 LEVEL WORKING IS EMPLOYED FIT LAMP LPI, WIRE AS SHOWN THUS AND MODIFY AS IN NOTES 5 (b) OR (c). CONNS. TO MAN RING & ALM RELAY SET (SAW B1560, IF FITTED) TO BE OMITTED. CONN. FROM TAG 'OL TO BE TERMINATED ON AUDIBLE ALARM TAG SAWB1450 TAGB3



BATT BX 205WG FUSE (39) 10Cob to 10Cob 1LS6 to 10LS6 10R2b to 1R2b
 EARTH R. 205WG ETH (38) 10C024 to 1C024 10LS6 to 1LS6



EXTENSION LINE & LINEFINDER CIRCUIT FOR P.B.X. NO. 3
 DUNFERMLINE, KIRKCALDY & THORNTON.
 REF:- SA B151
 T.G. 1713 (BASED ON HSA.81510)

| | | | |
|---|---------|--------------|-------------|
| 50 3173 PHOTO COPY RETOUCHED NO AMENDMENTS 2-1-55 | 5 | 26-4-54 | HPB |
| COLOURS ON LEADS HF 8 FT TO PG 18. ICORID WIRE NOT SWM (C05025) PAR | | | |
| AMENDMENT PARTICULARS | ISSUE | DATE | APPD |
| AT & C LTD LIVERPOOL | 662 RCD | APPROVED | DRAWN |
| | WRB | AWP 27/11/51 | CJC |
| | | CHECKED | DBB 2/1/51 |
| | | WIRING | DBB |
| | | CIRCUIT | AR 27/11/51 |