

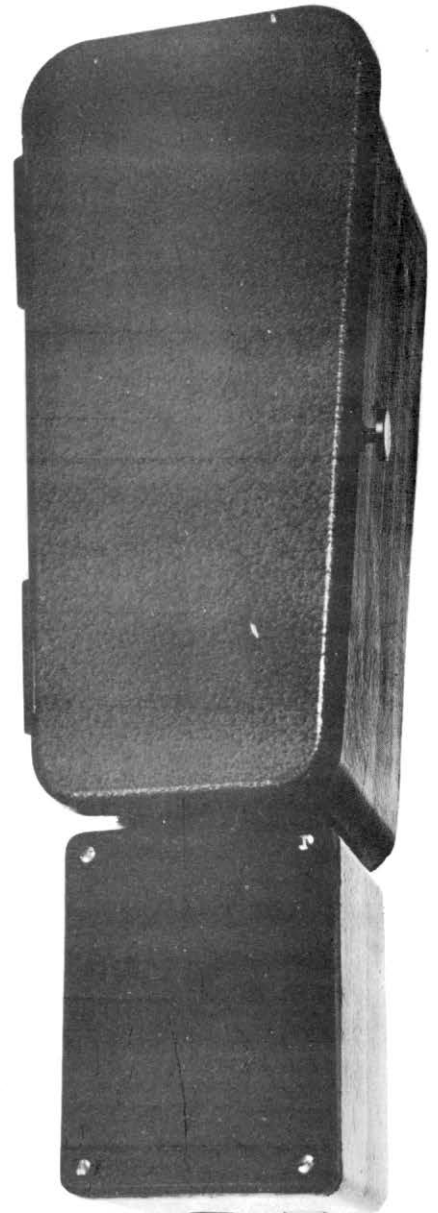
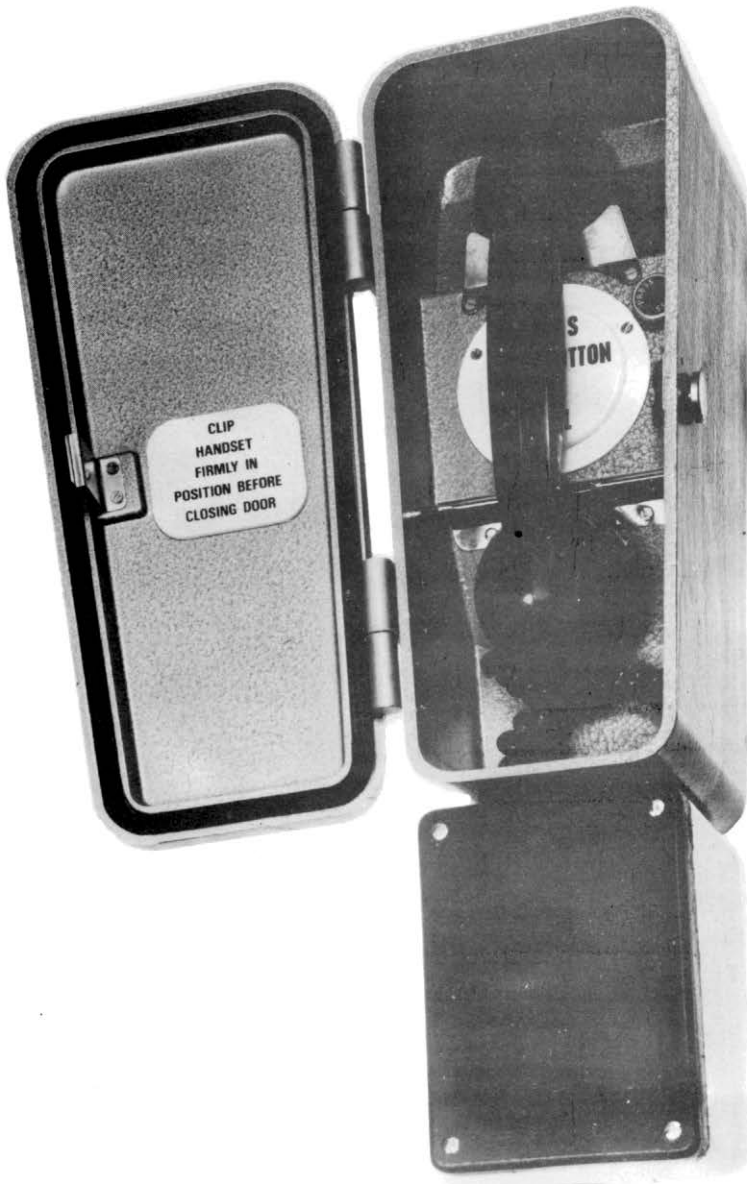


TELEPHONE WEATHERPROOF
(TRANSISTOR MAGNETO)
617/1/02188/007

Book 1

WEATHERPROOF TELEPHONE
TRANSISTOR MAGNETO

617/1/02188/007



[This page is intentionally blank]

A U T O , C. B. OR MAGNETO, ALL-WEATHER TELEPHONE

Every requirement for a weather-proof telephone for traction routes, building sites, etc., is met in the design of this instrument for wall, pole or post mounting. These requirements include compactness, Light weight, robustness, durability, high quality transmission, low cost, low maintenance liability, and security against unauthorised use.

Provision for an Operator Recall press-button when specified is made in the auto and c. b. telephones.

Electrical characteristics equivalent to those of the Etel phone ensure wide frequency response and volume efficiency over lines of up to 1000 ohms loop resistance.

CONSTRUCTION

The use of materials liable to corrosion is avoided. The enclosure, consisting of a base, a body and a hinged door, is corrosion-resistant aluminium alloy, other parts are brass, phosphor-bronze and high quality stainless steel,

The body is a robust aluminium alloy casting, webbed to form a solid internal shelf for the handset and drilled as necessary for the dial and/or press-button. Two screws inside the body secure it to the base, on which the remaining components are mounted.

The door, another aluminium alloy casting, has brass hinges and a Phosphor-bronze catch. It is channelled to mate with the rim of the body so that foamed neoprene in the channel excludes moisture when the door is shut. The automatic catch is plunger-controlled, a single motion of the hand sufficing to release it and flip open the door. Self-closing doors, and doors equipped with locks are available to special large quantity order.

The stoved enamelled hard aluminium alloy base, with three hollow bosses on its underside for mounting purposes fits well inside the telephone body and compresses the foamed neoprene strip to make the joint weatherproof, Two brass bosses threaded for 3/4" (19mm) dia. conduit are attached to the bottom of the base for the entry of external wires.

For magneto working, a cast aluminium alloy enclosure for the batteries is fixed to the bottom of the base; the conduit entries are then in the bottom of this auxiliary enclosure, and the incoming wires connect to a terminal block from whence they are permanently wired through an insulated hole into the telephone base.

INSTALLATION AND MAINTENANCE

Installation is facilitated by the telephone body being separate from the base, enabling the base to be fixed and the external wires terminated before the body is attached.

For maintenance, the body fixing screws are released, the door is then closed to protect the handset and the body lifted down to hang suspended from the base by the nylon cord provided. Thus all components and wires are accessible.

MOUNTING ADAPTORS

For pole fixing, a simple form of non-slip adaptor is supplied, consisting of a suitably drilled plate with two stainless steel worm clips; these are available in three sizes and adjustable to suit poles between 3 in. to 12 in. (76 to 304mm) diameter.

The post-fixing adaptor, for mounting motorway telephones only, on a 2 in. (51mm) diameter post, consists of a spigot mounting casting of aluminium alloy, with vertical telephone mounting plate.

COMPONENTS AND FINISH

Components similar to those in the Etelphone and therefore of proven reliability are used.

The handset with temperature resistant coiled cord, is moulded in high-impact plastic. The handset is held in position by a stainless steel 'rest' at the receiver end and a phosphor-bronze clip at the bottom.

The dial number-ring has black characters on a white ground. Unless otherwise specified, dials have standard numbering and a 2 : 1 break:make ratio.

The stainless steel 4 in. (101mm) dia. ringer gongs are mounted on the under-side of the base so that signals can be clearly heard.

The magneto version contains a transistor ringing-current generator which is actuated by the use of a pressbutton. A box for four ordinary torch cells is fitted at the lower end of the telephone.

Apparatus finishes are suitable for the tropics and connecting wires are insulated with p.v.c., which is impervious to moisture and not subject to mould growth or insect attack.

The front of the telephone displays a raised silhouette of a handset in light-grey to contrast with the darker background. The general interior and exterior hammer finish of the body is light-grey stoved enamel.

ORDERING INFORMATION

When ordering, please state the equipment items and corresponding code numbers from the table below, together with quantities required. Also provide information (a) and (b) as appropriate.

- (a) Wall, pole, or post mounting. For pole mounting, give diameter of pole.
- (b) Type of door, if other than standard manual-closing type.

Type No.	Wall Telephone	Dimensions			Weight
		Height	Max. Width	Depth	
617/1/02186/000 etc.)	Auto without press-button)	12 ¹ / ₂ in	5 ³ / ₄ in	6 ⁵ / ₈ in	10 ¹ / ₂ lb.
617/1/02187/000 etc.)	Auto with ")	(311mm)	(146mm)	(168mm)	(4.77kg)
617/1/02188/000 etc.)	C. B. without ") C. B. with ")	17 ¹ / ₂ in (444mm)	5 ³ / ₄ in (146mm)	6 ⁵ / ₈ in (168mm)	14 ³ / ₄ lb (6.69kg)
617/1/021/02187/014	Magneto C. B. Motorway	17 ¹ / ₂ in (444mm)	5 ³ / ₄ in (146mm)	8 ⁹ / ₁₆ in (217mm)	10 ¹ / ₂ lb (4.77kg)

Pole Mounting Unit Code	Dia of Pole
N111333A	3' - 6'
" B	6' - 9"
" C	9' - 12"
" D	without clips

Post Mounting Adaptor for Motorway Type C. B. Telephones	N200134A
--	----------

617/1/02188/007

Telephone, Weatherproof
(Transistor, Magneto)

LIST OF PARTS

SHEET
2-4

P.B.

PART
No

DESCRIPTION

CODE

B.P.O. CODE

46

Rod

N115435

47

Hinge, L.H.

N115436

48

Hinge, R.H.

N115437

49

Hinge, R.H.

N115438

50

Bracket

N115439

51

Bar, Locking

N118149

53

Clip, Handset

617/2/02177/000

54

Door

N115039

55

Sleeve

915/2/04134/001

60

Microswitch

N92188

5A

62

Grommet, Handset, Cord

N99630J2

63

Clip, Cable

N102409A2

94A/2

64

Label, Door Catch Plunger 'Press'

N109839

65

Block, Terminal

N109891A8

66

Microswitch

N110437

67

Spring

N115445

68

Disc, Neoprene

N117700

69

Strip, Neoprene

N203896

70

Strip, Neoprene

N203897

71

Label, Plessey

984/4/00002/003

107

Coil, Induction

N3857A1T

111

Capacitor, 0.9 μ F

400/4/98522/001

8019A

112

Capacitor, 470 μ F

402/4/98210/009

113

Capacitor, 0.33 μ F

437/4/98026/046

117

Resistor, 10 Ω

403/4/78127/001

118

Resistor, 120 Ω

403/4/78127/427

119

Resistor, 510 Ω

403/4/78127/442

120

Resistor, 200 Ω

403/4/78132/432

121

Resistor, 430 Ω

403/4/78132/440

122

Resistor, 33 Ω

403/4/78398/013

179

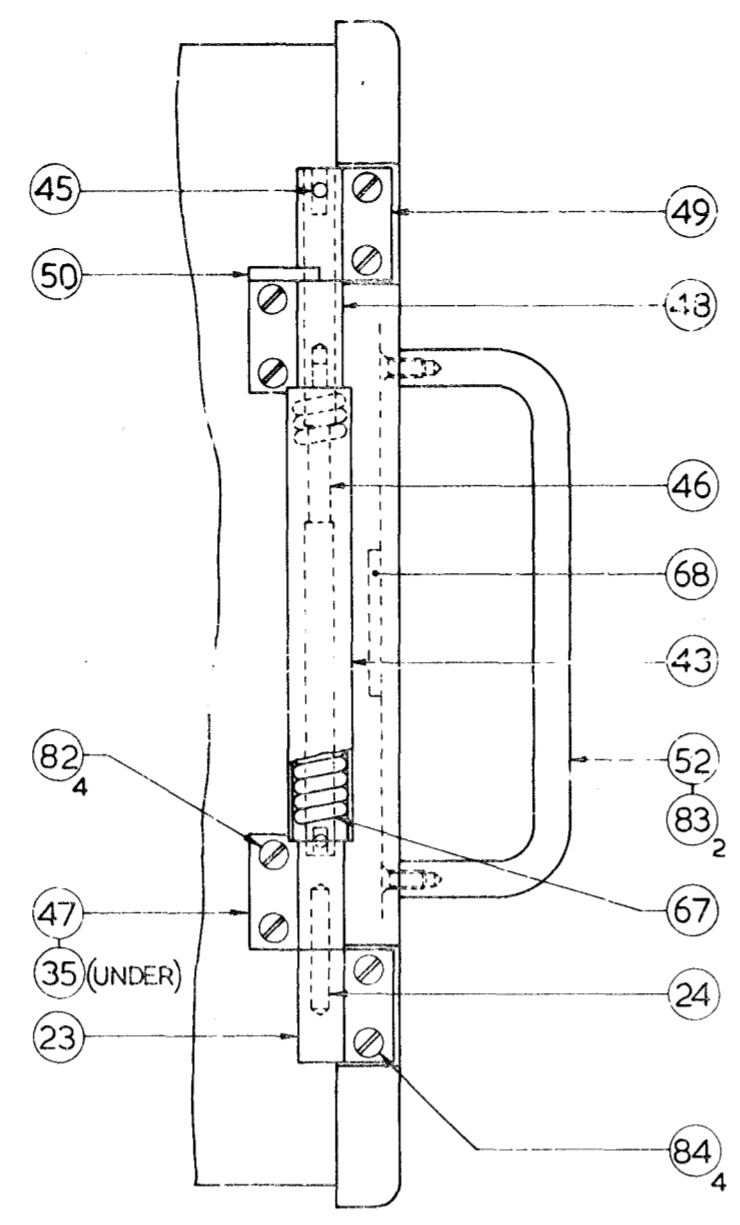
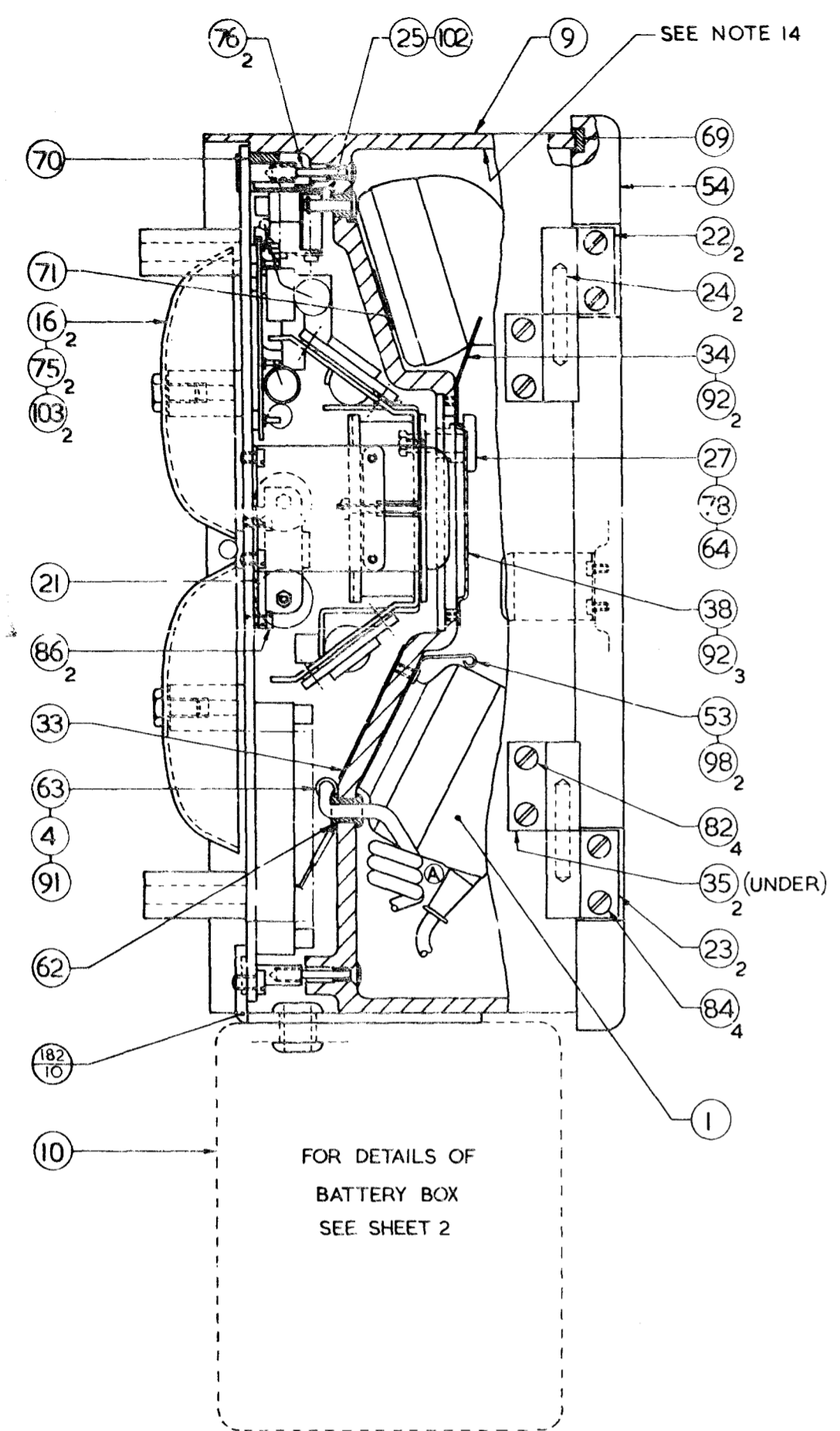
Body with Inserts

N114695

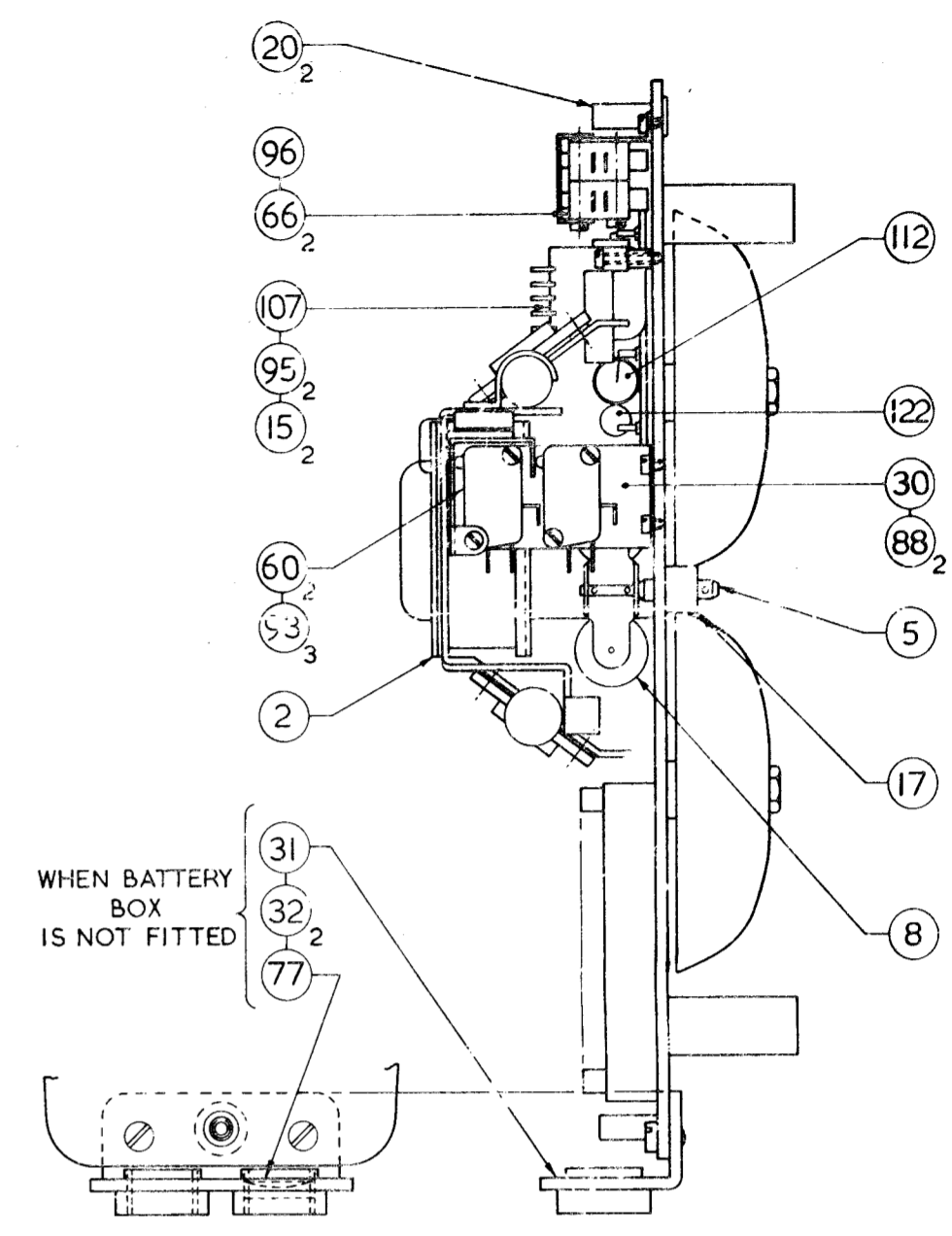
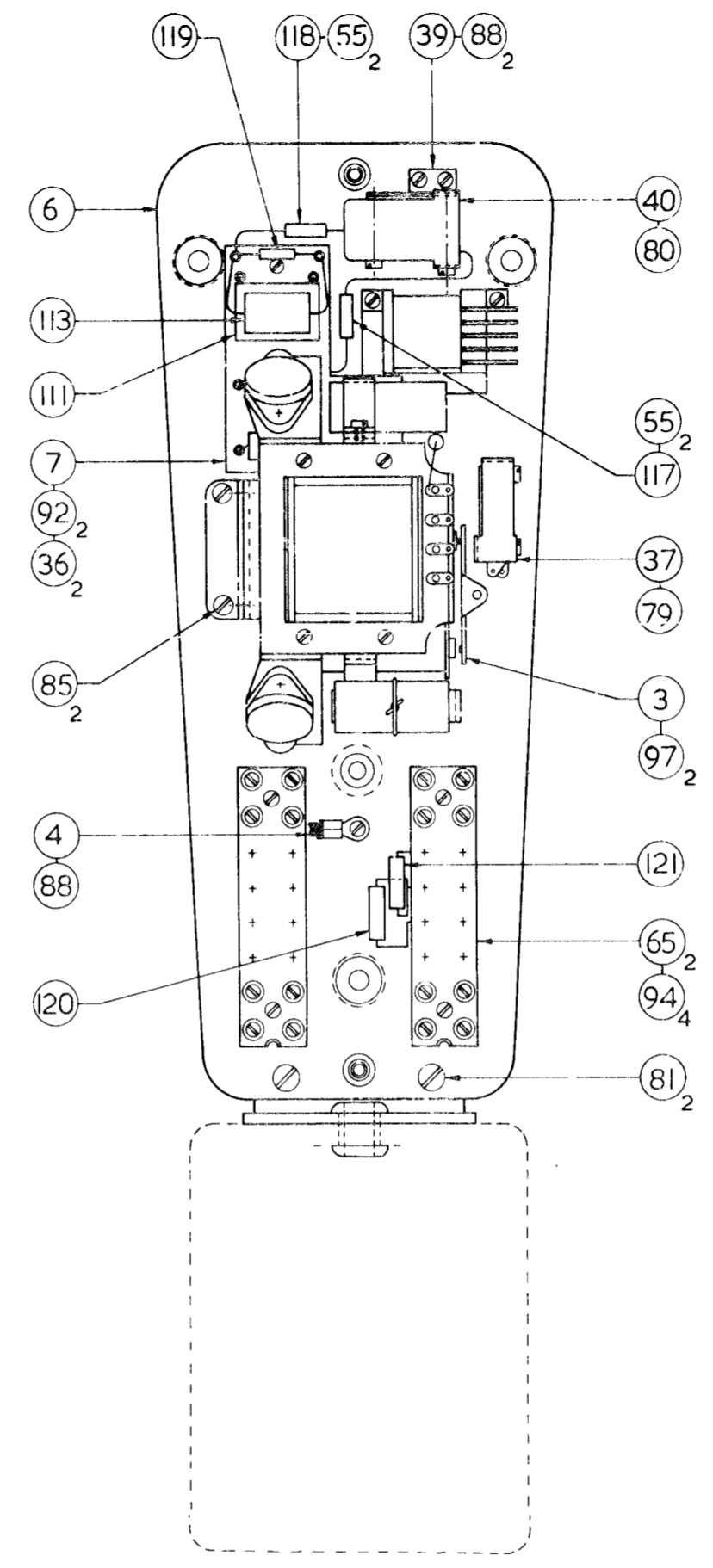
180

Cover, Battery Box

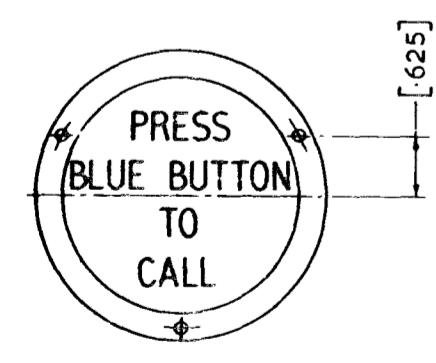
N113141



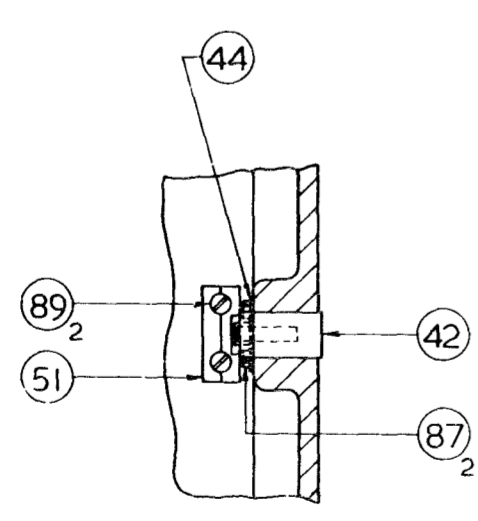
SPRING HINGE



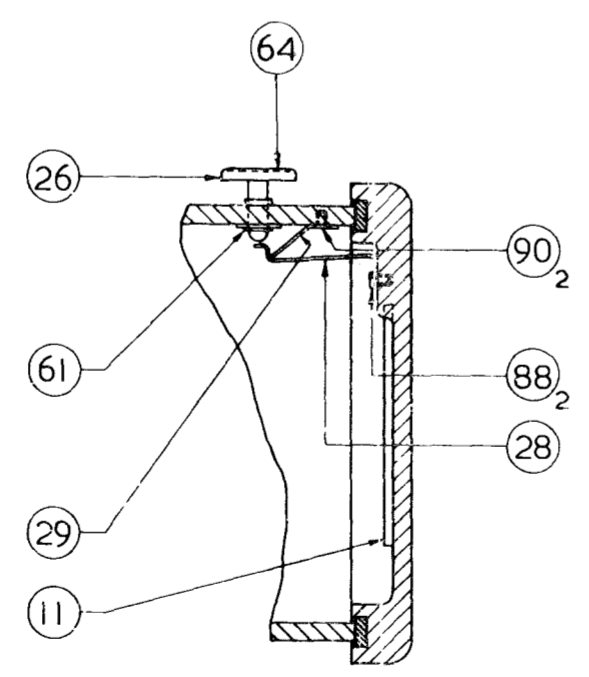
WHEN BATTERY BOX IS NOT FITTED



COVER ITEM 38



PO.43 TYPE LOCK PARTS



PART SECTION SHOWING DOOR CATCH (VIEWED FROM ABOVE)

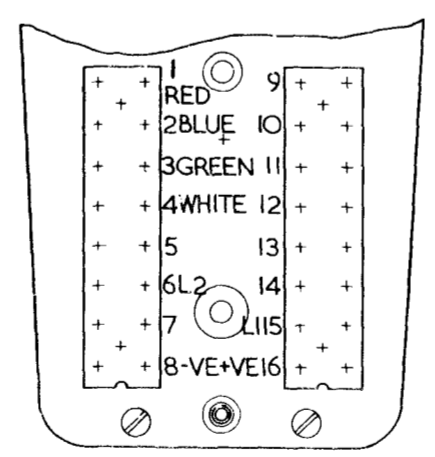


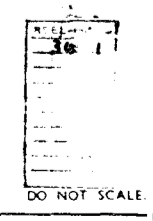
PLATE MARKINGS (SEE NOTE 9)

NOTES

- COIL TAGS ON RINGER COILS ITEM 8 & TRANSISTOR RINGING UNIT ITEM 2 TO BE FORMED PARALLEL TO BASE PLATE ITEM 6.
- BUSH ITEM 17 TO BE REAMED OUT TO GIVE A BEARING FIT ON ITEM 5 FREE FROM PLAY.
- BUSHES ITEMS 17 & 20 TO BE SECURELY RIVETTED IN POSNS SHOWN.
- SCREWS ITEM 97 TO BE LOCKED IN POSN. IN ACCORDANCE WITH APPROPRIATE PROCESS LAYOUT.
- D. AGRAM ITEM 33, GASKETS ITEMS 69 & 70 TO BE FIXED IN ACCORDANCE WITH APPROPRIATE PROCESS LAYOUT.
- LABEL ITEM 11 TO BE FIXED CENTRALLY INSIDE DOOR IN ACCORDANCE WITH APPROPRIATE PROCESS LAYOUT.
- LABEL ITEM 71 TO BE FIXED IN POSN. SHOWN ON L.H.S. OF H.M.T. TO PLESSEY TELECOM. GROUP STANDARD SPEC. 1000/SJ/00003.
- LABELS ITEM 64 TO BE FIXED IN PLUNGERS ITEMS 26 & 27 IN ACCORDANCE WITH APPROPRIATE PROCESS LAYOUT.
- PLATE ITEM 6 & COVER ITEM 33 TO BE MARKED AS SHOWN IN BLACK CHARACTERS 3/16" & 5/16" HIGH RESPECTIVELY.
- CODE (SEE ORDER) TO BE MARKED IN 3/16" CHARACTERS IN UPPER LEFT HAND CORNER ON BOTH SIDES OF PLATE ITEM 6.
- BUSH ITEM 17, PINS ITEM 24 & BUSHES A, B & C TO DRG. 162548 TO BE LUBRICATED WITH SHELL ALVANIA NO.3 GREASE.
- H.M.T. CLIP ITEM 53 TO BE ADJUSTED TO GIVE H.M.T. PULLOUT OF 1 1/2 - 2 1/2 LBS. AT POINT A.
- SPRING HINGE WHEN ASSEMBLED, FORCE REQ'D TO OPEN DOOR 1" MEASURED AT OUTER EDGE, CENTRALLY, WITH TELEPHONE IN VERTICAL POSN. SHOULD BE 24oz ± 3oz ASSEMBLY ASSEMBLE WITHOUT PIN ITEM 45, INSERT SCREWDRIVER IN SLOT OF ITEM 46 AND TURN CLOCKWISE 3/4 TURN UNTIL SLOT IN THIS PART LINES UP WITH ANY HOLE IN ITEM 49. THEN INSERT PIN ITEM 45, CHECK DOOR PRESSURE AND IF NECESSARY RE-ADJUST BY REMOVING PIN ITEM 45 AND ROTATING ROD ITEM 46 AS REQ'D. REFIT PIN AND RECHECK DOOR PRESSURE. TUBE ITEM 43 & SPRING ITEM 67 TO BE PACKED WITH SHELL ALVANIA NO.3 GREASE BEFORE ASSEMBLY.
- MONTH & YEAR OF MANUFACTURE eg 10/73 TO BE MARKED IN 3/16" CHARACTERS IN POSN. SHOWN.

AO	DRN	ENC
TR	TR	TR
CH	CH	CH
DEPT	DEPT	DEPT

TOLERANCES UNLESS OTHERWISE STATED: THREE PLACE DECIMAL DIMS ± TWO PLACE DECIMAL DIMS ± FRACTIONAL DIMENSIONS ±	MATERIAL STOCKLIST	FINISH FIN	REF. REPLACES N1245B2 ETC.
SCREW THREADS TO APPROPRIATE BRITISH STANDARD GENERAL REQUIREMENTS TO STANDARD B.I.G.O.	TITLE TELEPHONE (WEATHERPROOF, TRANSISTOR MAGNETO)		ISSUE 1.
THE PLESSEY COMPANY LIMITED TELECOMMUNICATIONS GROUP, BEE-TON			617/GA/O2188/000 ETC SHT F-2



DO NOT SCALE