

# TRIBUNE

## THE PHONE FOR THE FUTURE



British  
**TELECOM INPHONE™**

## Why is Tribune such an important telephone?

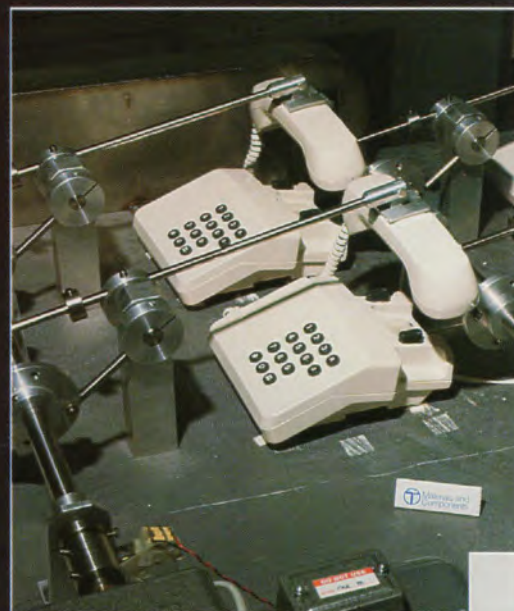
Tribune will replace the dial as the new mass market telephone for rental or sale and because it has been exclusively developed by BT, under BT control, no one else will be able to sell it in competition. We, and we alone, will benefit from the sales of Tribune – and the potential is enormous for this inexpensive, low-cost telephone designed and made in Britain.

## How good is it?

Never before has a BT Inphone been subjected to such comprehensive research, development and testing, not only to make sure that we are giving the public what they want from a press-button, mass market telephone, in terms of facilities and design, but to make sure Tribune performs to the highest possible standards of reliability.

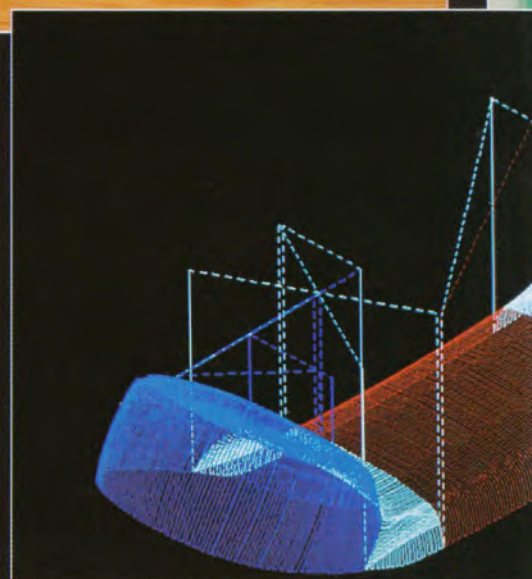
Exhaustive tests have been carried out over 18 months to make sure Tribune performs as the best in the market.

The table on the back page shows you just how well Tribune will perform. We have tested it in action as well as putting it through the toughest possible lab tests. Tribune has been the subject of the most extensive field trials ever undertaken by British Telecom. As many variations of working conditions were used as possible – even to the extent of placing instruments in locations right under radio transmitters to check for interference! After such an extensive field trial we're confident we have in Tribune a telephone as reliable as any other telephone of its kind, if not more so.



## What facilities does Tribune have?

- Last number redial (LD only).
- Secrecy button.
- Recall button.
- Alternate recall – externally switchable by the engineer.
- Compatible with all BT switchboards, including Monarch.
- Bell or tone-caller: customers can choose from one of two separate versions.
- Adjustable volume control on both bell and tone-caller versions.
- Available in three colours. English Red, Polar White and Charcoal Grey.



# TRIB TRIED &

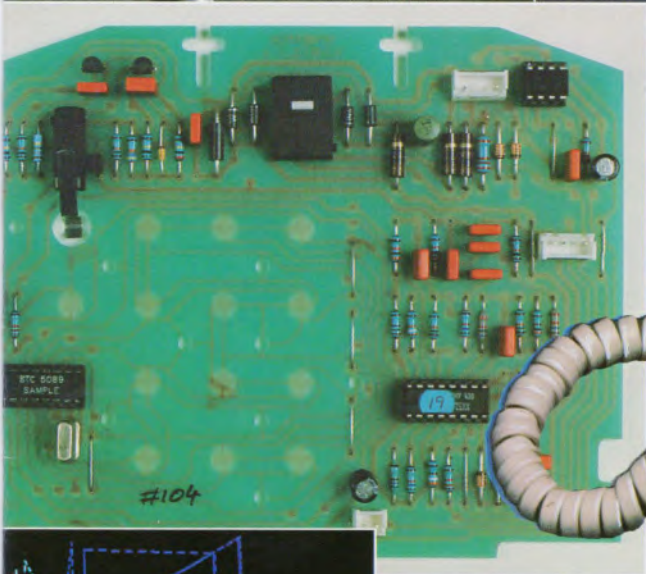
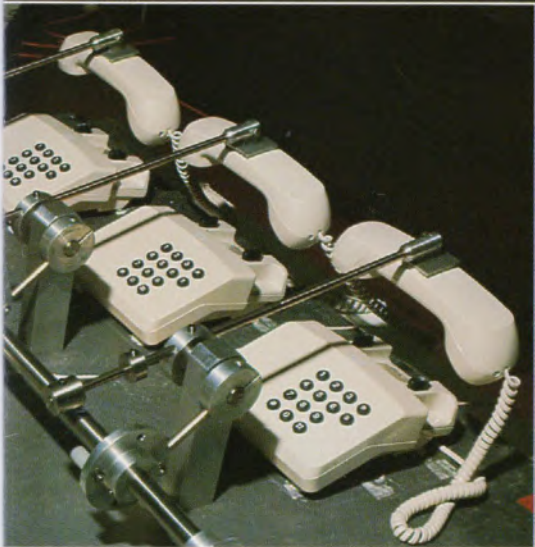
# PHONE TESTED

## Any special features?

- Larger, round, well-spaced buttons are easier to use.
- A special flexible handset cord reduces movement of the base even on a polished wood surface.
- The modern design and styling still retains a traditional feel that appeals to dial phone users.
- Fewer moving parts mean greater reliability.
- Specially designed to be tough and robust.
- An inductive coupling handset will be available by the end of 1986.
- Technical performance figures are contained on the back page.

## Will Tribune sell well?

Yes. We have gone out of our way to produce a telephone the public wants and we believe the sales potential is enormous. We went all round the country asking residential and business users what they would like, and we made sure Tribune has the facilities and qualities the public want. As part of our detailed research, we tested a variety of different designs with the public and Tribune came out on top.



# TECHNICAL INFORMATION

## Field of Use

- Direct Exchange Lines, plus extensions.
- StarServices.
- The following PBXs were tested for compatibility:

Compact Monarch	Monarch 250
MDX	Regent
IT 440	SX 2000
Kinsman	Viceroy
Harris (non BT)	BTeX

Ringer Equivalence Number is 1.0

## Colours

MF Versions: Polar White  
Charcoal Grey  
LD Versions: Polar White  
Charcoal Grey  
English Red

The above are available with either bell or a tone caller as separate versions.

## Dimensions (with handset on)

Height	85mm
Width	200mm
Depth	185mm
Weight (excluding packing)	700gs
Line cord	3m
Handset cord, from base to handset (unextended).	400mm

## Reliability Tests

<b>The Keypad</b>	Each button was pressed 100,000 times at different temperatures and humidities.
<b>Volume Control</b>	The volume controls were operated continuously 1000 times.
<b>The Hookswitch</b>	This was continuously operated with the normal handset dropped onto it from 100mm 100,000 times. A second test was done with a handset of twice the nominal weight 50,000 times. Both tests were carried out at the rate of 7½ times a minute.
<b>Environmental Testing</b>	Tribune was also tested to extremes of temperature from +40 deg centigrade to -5 deg centigrade at a relative humidity of not more than 80 per cent.
<b>Drop Tests</b>	Two falls from a height of 1 metre on each of three mutually perpendicular axes.
<b>Shock Tests</b>	Six shocks in each of three mutually perpendicular axes.
<b>Vibration</b>	A vibration of 30 minutes duration was applied to each of three mutually perpendicular axes.
<b>Bump</b>	4000 bumps were applied through the base in the normal operating position.
<b>British Standards</b>	Tribune conforms to BS 6301 (safety), BS 6305 (apparatus connected to network) and BS 6317 (simple voice terminals).
<b>Recall</b>	Switchable externally by engineer. The nominal voltage drop across the telephone during earth recall is approximately 0.8v. The nominal duration of timed break is 78 ± 8ms.
<b>Loudness</b>	Average bell loudness is 74db SPL ± 3db. Average tone caller loudness is 75db SPL ± 4db.
<b>Interference Protection</b>	Extra stages of RFI filtering have been incorporated to improve operation in high RF field strength areas.
<b>Lightning Interference</b>	The line interface circuitry provides secondary surge protection for lightning strikes. A bridge is provided to avoid line polarity problems.

## Codes

AFS Code: LD UA91  
MF UA99

Engineering codes:

LD Tele 9901 R (Bell)  
Tele 9902 R (Tone caller)

MF Tele 9401 AR (Bell)  
Tele 9402 AR (Tone caller)

**APPROVED**  
for connection  
to telecommunication  
systems specified in the  
instructions for use  
subject to the  
conditions set out  
in them.

S/1000/3/F/500318

British  
**TELECOM INPHONE™**  
IN TOUCH · IN TONE · INPHONE