

BULLETIN NO. 138B

# TELETYPE

## PRINTING TELEGRAPH SYSTEMS

BULLETIN NO. 138B

ADJUSTMENTS  
TYPE BAR PAGE PRINTER  
MODEL 15

**TELETYPE**  
CORPORATION  
SUBSIDIARY OF  
*Western Electric Company*  
CHICAGO, U.S.A.

BULLETIN NO. 138B

# TELETYPE

## PRINTING TELEGRAPH SYSTEMS

BULLETIN NO. 138B

ADJUSTMENTS

TYPE BAR PAGE PRINTER

MODEL 15



LIST OF EFFECTIVE PAGES  
JANUARY, 1958  
SUPERSEDES OCTOBER, 1944 ISSUE

Page Number	Change in Effect	Page Number	Change in Effect
A to G	Original		
1-1 to 1-64	Original		
2-1 to 2-5	Original		
3-1 to 3-26	Original		

The above list indicates the effective pages as of the date of issue. Upon receipt of change pages, insert them numerically and discard any superseded pages.



MODEL 15 TYPE BAR PAGE PRINTER

## TABLE OF CONTENTS

Paragraph	Page	Paragraph	Page
<b>SECTION 1 - ADJUSTMENTS</b>			
1. General	1-1	38. Carriage Support and Pull Bar Bail Plunger Rollers	1-9
2. Miscellaneous Instructions		39. Main Shaft	1-9
a. Manual Selection of Characters or Functions	1-1	40. Main Shaft Jaw Clutch Throwout Lever	1-9
b. Adjusting Motor Speed	1-1	41. Main Shaft Jaw Clutch Throwout Lever Spring Tension	1-9
c. Orientation	1-1	42. Main Shaft Jaw Clutch Spring Tension	1-9
d. Removal of Type Bar Carriage from Typing Unit	1-2	43. Spacing Shaft Lower Bearing Bracket	1-10
e. Removal of Type Bar Segment from Type Bar Carriage	1-2	44. Printing Bail Shaft Right Bearing	1-10
f. Removal and Replacement of Type Bars	1-2	45. Printing Bail	1-10
g. Removal and Replacement of Code Bars	1-3	46. Function Lever Bail	1-10
h. Mounting the Bell Crank Assembly	1-3	47. Blocking Plate	1-10
i. Replacing the Type Bar Carriage	1-3	48. Function Lever Bail - One Piece	1-11
		49. Sixth Vane Extension Spring Compression	1-11
		50. Sixth Vane	1-11
		51. Selector Vanes	1-12
		52. Function Bail Spring Tension	1-12
		53. Printing Bail Spring Tension	1-12
		54. Selector Armature Bracket Link Friction	1-12
		55. Selector Lever Spring	1-12
		56. Selector Separator Plate	1-12
		57. Selector Armature	1-12
		58. Selector Armature Bracket Link	1-13
		59. Selector Armature Bracket	1-13
		60. Armature Stops	1-14
		61. Armature Locking Wedge	1-14
		62. Armature Locking Lever Spring Tension	1-14
		63. Stop Lever Eccentric Screw	1-14
		64. Stop Lever Spring Tension	1-15
		65. Trip Latch Spring Compression	1-15
		66. Selector Stop Arm and Stop Lever Engagement	1-15
		67. Armature Trip - Off Eccentric Screw	1-15
		68. Selector Magnet Coil	1-15
		69. Magnet Bracket	1-15
		70. Selector Separator Plate	1-15
		71. Armature Pivot Screw	1-15
		72. Selector Core and Armature Alignment	1-16
		73. Selector Arm Pivot Screw	1-16
		74. Selector Arm Bracket	1-16
		75. Locking Wedge	1-17
		76. Locking Lever Spring Tension	1-17
		77. Selector Arm Stop Detent	1-17
		78. Selector Arm Stop Detent Spring Tension	1-17
		79. Selector Lever Spring Tension	1-17
		80. Selector Magnet Bracket Position	1-17
		81. Selector Magnet Bracket	1-18
		82. Armature Lever Spring Tension	1-18
		83. Selector Arm Operating Screw	1-18
		84. Selector Arm Spring Tension	1-18
		85. Stop Lever Eccentric Screw	1-19
		86. Trip Latch Spring Compression	1-19
		87. Stop Lever Spring Tension	1-19
		88. Selector Stop Arm and Stop Lever Engagement	1-19
<b>TYPING UNIT</b>			
3. Plunger Guide Roller Bracket Preliminary	1-4		
4. Flanged Guide Roller	1-4		
5. Plunger Guide Roller Bracket Final	1-4		
6. Plunger Roller Eccentric Mounting Stud	1-4		
7. Pull Bar Spring Tension	1-4		
8. Ribbon Feed Pawl Spring Tension	1-4		
9. Code Bar Mounting Plate (Pull Bar Guide)	1-4		
10. Ribbon Feed Shaft Bearing Plates	1-5		
11. Ribbon Feed Shaft Detent Spring	1-5		
12. Ribbon Feed Shaft Detent Spring Pressure	1-5		
13. Vertical Ribbon Feed	1-5		
14. Ribbon Spool Brackets	1-5		
15. Ribbon Spool Shaft Spur Gears	1-5		
16. Vertical Ribbon Feed Shaft Spur Gears	1-5		
17. Ribbon Spool Cups	1-6		
18. Vertical Ribbon Feed Shaft Spring Tension	1-6		
19. Ribbon Reverse Arms Ribbon Guide Slot	1-6		
20. Ribbon Reverse Shafts	1-6		
21. Ribbon Reverse Shafts Collars	1-6		
22. Ribbon Reverse Shafts Links	1-6		
23. Ribbon Spool Cups and Ribbon Reverse Arm Backstop	1-7		
24. Ribbon Reverse Arm Yield Spring Tension	1-7		
25. Ribbon Reverse Pawl Spring Tension	1-7		
26. Ribbon Reverse Bail Spring Compression	1-7		
27. Type Bar Backstop (Rigid Type)	1-7		
28. Type Bar Backstop (Floating Type)	1-7		
29. Ribbon Shift Lever Bracket	1-8		
30. Ribbon Oscillator Lever Spring Tension	1-8		
31. Ribbon Shift Lever Spring Tension	1-8		
32. Margin Bell Pawl Spring Tension	1-8		
33. Ribbon Lockout Bar Detent Spring Pressure	1-8		
34. Ribbon Lockout Bar Detent Spring Pressure	1-8		
35. Right Pull Bar Spring Bracket	1-8		
36. Left Pull Bar Spring Bracket	1-9		
37. Margin Adjusting Screw Arm Spring Pressure	1-9		

Paragraph	Page	Paragraph	Page
89. Trip-Off Screw	1-19	140. Carriage Return Latch Bar Latch	1-26
90. Platen Unit Pilot Screws	1-19	141. Carriage Return Lock Bar Latch Eccentric Screw	1-26
91. Platen Shift-Unshift Stop Post	1-19	142. Carriage Return Lock Bar Latch Spring Tension	1-26
92. Unshift (Letters) Stop Screw	1-20	143. Carriage Return Lock Bar	1-26
93. Shift (Figures) Stop Screw	1-20	144. Carriage Return Operating Lever Stop Screw	1-27
94. Shift (Figures) Unshift (Letters), and Line Feed Function Lever Spring Tensions	1-20	145. Carriage Return Reset Bar Spring Tension	1-27
95. Space Function Lever Spring Tension	1-20	146. Carriage Return Function Lever Spring Tension	1-27
96. Blank Printing and Spacing Cutout Function Lever Spring Tension	1-20	147. Carriage Return Operating Lever Spring Tension	1-27
97. Function Bail Blade	1-20	148. Carriage Return Clutch Spring Compression	1-27
98. Unshift on Space Cutout Lever	1-21	149. Dashpot Lever Spring Tension	1-27
99. Shift (Figures) and Unshift (Letters)	1-21	150. Spacing Stop Lever Bracket	1-27
100. Platen Balance Spring Tension	1-21	151. Spacing Stop Lever Spring Tension	1-28
101. Shift-Unshift Detent	1-21	152. Carriage Guide Screws	1-28
102. Shift-Unshift Detent Spring Tension	1-21	153. Code Bar Bell Cranks	1-28
103. Sixth Vane Extension	1-21	154. Spacing Rack	1-28
104. Unshift (Letters) and Shift (Figures) Push Bar Spring Tensions	1-22	155. Locking Function Lever Spring Tension	1-28
105. Platen Shaft	1-22	156. Sixth Vane Detent Spring Tension	1-28
106. Single-Double Line Feed Detent	1-22	157. Carriage Return Spring Drum	1-28
107. Single-Double Line Feed Detent Spring Pressure	1-22	158. Paper Spindle Drag Spring	1-29
108. Line Feed Detent Lever	1-22	159. Platen Friction Assembly	1-29
109. Line Feed Link Turnbuckle	1-22	160. Send-Receive T Lever Friction Washer	1-29
110. Line Feed Push Bar Spring Tension	1-22	161. Universal Function Lever Spring Tension	1-29
111. Line Feed Detent Lever Spring Tension	1-23	162. Blank Function Lever Spring Tension	1-29
112. Line Feed Pawl Spring Tension	1-23	163. Send-Receive Mechanism Plate	1-29
113. Line Feed Check Screw	1-23	164. Intermediate Lever Stop Bracket	1-30
114. Line Feed Check Post Stop Screw	1-23	165. Intermediate Lever Spring Tension	1-30
115. Line Feed Check Lever	1-23	166. Motor Plate	1-30
116. Line Feed Check Lever Spring Tension	1-23	167. Send-Receive Reset Lever Upper Adjusting Screw	1-31
117. Pressure Roller Release Shaft Collars	1-23	168. Left Margin Adjusting Screw	1-31
118. Pressure Roller Release Cams	1-23	169. Right Margin Adjusting Screw	1-31
119. Pressure Roller Spring Tension	1-24	170. Ribbon Oscillator Lever	1-31
120. Pressure Roller Release Lever Shafts	1-24	171. Ribbon Lockout Bar	1-32
121. Paper Chute Spring Tension	1-24	172. Spacing Clutch Torque	1-32
122. Paper Chute	1-24	173. Margin Signal Bell	1-32
123. Paper Fingers	1-24	174. Selector Clutch Torque	1-32
124. Paper Fingers Shaft Spring Tension	1-24	175. Bail Cam Unit Friction Clutch Torque	1-32
125. Paper Straightener Rod Stops	1-24	176. Dashpot Vent Screw	1-33
126. Paper Straightener Rod Spring Tension	1-24		
127. Paper Guides	1-25		
128. Spacing Escapement Pawl Operating Arm	1-25		
129. Spacing Escapement Pawl Spring Tension	1-25		
130. Margin Bell Hammer	1-25		
131. Margin Bell Hammer Spring Tension	1-25		
132. Signal Bell Hammer Spring Tension	1-25		
133. Signal Bell Latch Bar Latch Shims	1-25		
134. Signal Bell Latch Bar Latch	1-25		
135. Signal Bell Hammer Backstop	1-25		
136. Signal Bell Operating Lever Spring Tension	1-26		
137. Signal Bell Reset Bar Spring Tension	1-26		
138. Bell Function Lever Spring Tension	1-26		
139. Carriage Return Latch Bar Latch Shims	1-26		
		KEYBOARD UNIT	
		177. Lock Loop Spring Tension	1-33
		178. Locking Lever Shaft Bracket	1-33
		179. Transmitting Contacts Gap	1-33
		180. Contact Spring Pressure	1-33
		181. Clutch Spring Compression	1-33
		182. Clutch	1-33
		183. Lock Loop Roller	1-33
		184. Universal Bar Pilot Screws	1-34
		185. Trip-Off Pawl Stop Plate	1-34
		186. Intermediate Pawl Eccentric	1-34

Paragraph	Page	Paragraph	Page
187. Clutch Throwout Lever Eccentric	1-34	225. Right Pressure Roller Lever Spring Collar	1-41
188. Trip-Off Pawl Eccentric	1-34	226. Right Pressure Roller Lever Spring Tension	1-41
189. Clutch Throwout Lever Spring Tension	1-34	227. Left Pressure Roller Spring Tension	1-41
190. Trip-Off Pawl Spring Tension	1-34	228. Paper Stripper	1-41
191. Transmitting Cam Cylinder End Play	1-34	229. Pulley Collars	1-41
192. Key Lever Spring Tension	1-34	230. Left Margin Adjusting Screw	1-41
193. Repeat Space Rod	1-34	231. Platen Friction Assembly	1-42
194. Repeat Space Rod Bracket	1-35	232. Platen Roller Sprocket Rings	1-42
195. Repeat Space Rod Spring Tension	1-35	233. Paper Guide Posts	1-42
		234. Cover Paper Guide Posts	1-42
BASE UNIT			
196. Motor Unit Slip Connection Springs	1-35	PLATEN INDEXING MECHANISM FOR SPROCKET FEED PRINTERS	
197. Line Jack Springs	1-35	235. Contact Lever Eccentric	1-43
198. Keyboard Jack Springs	1-35	236. Platen Friction Assembly	1-43
199. Typing Unit Slip Connection Spring	1-35	237. Removable Gears	1-43
200. Line Relay Jack Contact Gap	1-36	238. Cam Clutch Torque	1-43
201. Line Relay Jack Contact Spring Tension	1-36	239. Contact Lever Spring Tension	1-43
202. Upper Contact Lever Spring Tension	1-36		
203. Lower Contact Lever Spring Tension	1-36	MECHANICAL MOTOR STOP	
204. Safety Pawl Spring Tension	1-36	240. Motor Stop Lever Bracket	1-43
205. Send-Receive-Break Contact Springs	1-36	241. Motor Stop Lever Eccentric	1-43
206. Stop Lever Plate	1-37	242. Motor Stop Lever Backstop Screw	1-44
207. Break Lever Adjusting Plate	1-37	243. Motor Stop Pawl Backstop	1-44
208. Stop Lug	1-37	244. Motor Stop Release Lever Eccentric	1-44
209. Upper Contact Lever Spring Tension	1-37	245. Motor Stop Pawl Spring Compression	1-44
210. Stop Lever Spring Tension	1-37	246. Motor Stop Lever Spring Tension	1-44
211. Send-Receive-Break Contact Springs	1-37	247. Motor Stop Contact Lever Spring Tension	1-44
212. Control Relay	1-38	248. Motor Stop Function Lever Spring Tension	1-44
213. Send-Receive-Break Mechanism (Single Upper Contact)	1-38	249. Right Motor Stop Contact	1-44
214. Send-Receive-Break Mechanism (Two Upper Contacts)	1-39	250. Left Motor Stop Contact	1-45
		251. Reset Lever Lower Adjusting Screw	1-45
CENTER CONTACT GOVERNOR			
215. Alignment and Squareness of Governor Contacts	1-39	252. Reset Lever Downstop Screw	1-45
216. Speed Adjusting Wheel Friction Washer Spring Tension	1-39	SHIFT-BLANK-STOP MECHANICAL MOTOR STOP	
217. Inner and Outer Disc Contact Spring	1-39	253. Adapter Plate (Trigger Assembly)	1-45
218. Governor Brush Spring Plate Bracket	1-39	254. Trigger Guide	1-45
219. Governor Brush Spring Pressure	1-40	255. Blocking Lever Spring	1-46
220. Governor Adjusting Bracket	1-40		
221. Speed Adjusting Lever Stop Plate	1-40	UPPER CASE "H" ELECTRICAL MOTOR CON- TROL FOR UNITS EQUIPPED WITH A HOLD- ING MAGNET SELECTOR	
222. Governor Shims	1-40	256. Motor Stop Function Lever Spring Tension	1-46
		257. Motor Stop Contact	1-46
SYNCHRONOUS MOTOR			
223. Synchronous Motors with Three Brush Starting Switch	1-40	258. Start Magnet Core	1-46
		259. Stop Magnet Core	1-46
VARIABLE FEATURES			
SPROCKET FEED PRINTERS			
224. Left Pressure Roller Lever	1-41	260. Start Magnet Bracket	1-47
		261. Stop Magnet Bracket	1-47
		262. Armature Stop	1-47
		263. Latch Backstop Screw	1-47
		264. Stop Magnet Armature Spring Tension	1-47
		265. Start Magnet Armature Spring Tension	1-47

Paragraph	Page	Paragraph	Page
266. Latch Spring Tension	1-47	TWO COLOR RIBBON CONTROL	
267. Inner Contact Assembly	1-47	302. Ribbon Oscillator Lever	1-53
268. Outer Contact Assembly	1-47	303. Ribbon Oscillator Lever Latch Bracket	1-53
HORIZONTAL TABULATOR MECHANISM		304. Ribbon Oscillator Latch Spring Tension	1-53
269. Tabulator Bar	1-48	305. Ribbon Oscillator Lever Adjustable Stop	1-53
270. Contact Lever Screw	1-48	306. Parallelogram Bar Brackets	1-53
271. Tabulator Latch	1-48	307. Magnet Yoke	1-54
272. Tabulator Latch Bar Extension	1-48	308. Armature Eccentric Backstop	1-54
273. Tabulator Stops	1-48	309. Armature Spring Tension	1-54
274. Transmitter Distributor Control Contact	1-49	310. Contact Operating Lever Bracket	1-54
275. Tabulator Function Lever Spring	1-49	311. Contact Springs	1-54
276. Tabulator Latch Bar Spring	1-49	312. Link	1-55
277. Tabulator Bar Spring	1-49	313. Contact Operating Lever Spring Tension	1-55
278. Front Spacing Escapement Pawl	1-49	314. Two Color Mechanism No. 5 and No. 6 Function Lever Spring Tensions	1-55
SWITCH CUT-IN AND AUTOMATIC CUT- OUT OF HORIZONTAL TABULATION		315. Loading Plate	1-55
279. Spacing Stop Lever Bracket	1-49	316. Type Bar Guide	1-55
280. Blocking Lever Extension Bracket	1-50	MECHANICAL WORD COUNTER	
281. Magnet Bracket Position	1-50	317. Star Wheel Tangential Tension	1-55
282. Signal Bell Hammer Backstop	1-50	318. Counter Assembly Position	1-55
283. Locking Contact	1-50	319. Operating Linkage	1-56
284. Spacing Stop Lever Spring Tension	1-50	320. Slide Bar Spring Tension	1-56
285. Blocking Lever Spring Tension	1-50	321. Link Yield Spring Tension	1-56
286. Right Margin Adjusting Screw	1-51	ELECTRICAL WORD AND OPERATIONS COUNTER	
REPERFORATOR MOTOR CONTROL MECHANISM		322. Star Wheel Tangential Tension	1-56
287. Reperforator Control Plate	1-51	323. Contact Requirements	1-56
288. Reperforator Control Contact	1-51	324. Contact and Bracket Assembly	1-56
289. Contact Pawl Spring Tension	1-51	325. Operating Linkage	1-57
290. Reperforator Control Function Lever Spring Tensions	1-51	326. Slide Bar Spring Tension	1-57
AUTOMATIC CARRIAGE RETURN AND LINE FEED		327. Link Yield Spring Tension	1-57
291. Carriage Return Latch Bar Latch Shims	1-51	FEEDING FOUR LINES PER INCH	
292. Carriage Return Function Lever Eccentric Screw	1-51	328. Line Feed Link Turnbuckle	1-57
293. Operating Bail Line Feed Extension	1-52	329. Line Feed Check Screw	1-57
294. Automatic Carriage Return and Line Feed Function Lever Eccentric Screw	1-52	END OF LINE PRINTING AND SPACING	
295. Mounting Bracket	1-52	330. Printing and Spacing Cutout Mechanism Bracket	1-57
296. Trigger Guide	1-52	331. Printing Cutout Latch Eccentric Bushing	1-57
297. Trigger Adjustable Screw	1-52	332. Right Margin Adjusting Screw	1-58
298. Carriage Return and Automatic Carriage Return and Line Feed Function Lever Spring Tensions	1-52	333. Printing Cutout Latch Downstop Eccentric	1-58
299. Trigger Spring Tension	1-53	334. Spacing Stop Lever Spring Tension	1-58
300. Bell Crank Retainer Yield Lever Spring Tension	1-53	335. Printing Cutout Latch Spring Tension	1-58
301. Line Feed Link Turnbuckle	1-53	REMOTE SIGNAL BELL CONTACT (WITH LATCH)	
		336. Contact and Backstop Bracket	1-58
		337. Contact Lever Latch Mounting Screw	1-58
		338. Upper Contact Spring Tension	1-58



Paragraph	Page	Paragraph	Page
339. Lower Contact Spring Tension	1-59	371. Contact Lever Spring Tension	1-63
340. Contact Gap	1-59		
341. Signal Bell Hammer Backstop Screw	1-59		
342. Contact Lever Latch Adjusting Screw	1-59		
343. Contact Lever Latch Spring Tension	1-59		
STATION SELECTOR PRINTERS		FORM ACCUMULATING SHELF	
344. Call Contacts	1-59		
345. Call Contact Function Lever Spring Tension	1-59		
346. Transfer Contacts	1-59		
347. Transfer Contact Lever Spring Tension	1-60		
348. Transfer Contact Function Lever Spring Tension	1-60		
349. Function Lever Bail	1-60		
350. Disconnect Contact	1-60		
351. Keylever Link	1-60		
352. Bail Spring Tension	1-60		
353. Bail Backstop	1-60		
354. Answer-Back-Magnet Heel Piece Air Gap	1-60		
355. Bail	1-61		
100 WPM KEYBOARD		SPROCKET FEED TEARING EDGE AND PAPER GUIDE	
356. Transmitting Contact Gap	1-61	373. Paper Stripper	1-63
357. Transmitting Contact Spring Stiffener	1-61	374. Paper Guide Plate	1-63
358. Lock Loop Backstop Screw	1-61	375. Tearing Edge Mounting Bracket	1-63
		376. Tearing Edge Blade	1-63
		377. Cover Gap	1-63
		378. Margin Guide Adjustment	1-63
KEYBOARD CAM OPERATED CONTACTS		PAPER OUT MECHANISM	
359. Pulsing Contact	1-61	379. Switch Plunger Overtravel	1-64
		380. Paper Follower Arm	1-64
		381. Paper Follower Arm Spring Tension	1-64
MECHANISM FOR OPENING AND CLOSING EXTERNAL CIRCUITS		SECTION 2 - LUBRICATION	
360. Left Contact Assembly	1-61	1. General	2-1
361. Left Function Lever Spring Tension	1-61	2. Typing Unit	2-1
362. Right Contact Assembly	1-61	a. Type Bar Carriage Assembly	2-1
363. Contact Lever Spring Tension	1-62	3. Typing Unit Less Type Bar Carriage Assembly	2-1
364. Right Function Lever Spring Tension	1-62	a. Platen Unit	2-1
		b. Main Shaft	2-2
		c. Selector Unit	2-2
		d. Bail Unit	2-2
		e. Vane Frame Assembly	2-3
		f. Spacing Shaft Assembly	2-3
		g. Carriage Return Mechanism	2-3
		h. Bell Function	2-3
		i. Shift-Unshift Mechanism	2-3
		j. Line Feed Function	2-4
		4. Motor Unit	2-4
		5. Base	2-4
		6. Keyboard	2-4
		a. Bottom Side of Keyboard	2-4
		b. Top Side of Keyboard	2-4
		7. Variable Features	
		a. Sprocket Feed	2-4
		b. Platen Indexing Mechanism	2-4
		c. Mechanical Motor Stop Mechanism	2-5
		d. Electrical Motor Stop Mechanism	2-5
		e. Horizontal Tabulator Mechanism	2-5
		f. Switch Cut-In and Automatic Cut-Out of Horizontal Tabulator	2-5
		g. Reperforator Motor Control Mechanism	2-5
		h. Two-Color Ribbon Mechanism	2-5
		i. End-of-Last Form Indicating Mechanism	2-5
		j. Paper Out Mechanism	2-5
END-OF-LAST-FORM INDICATING MECHANISM MOUNTED ON TYPING UNIT OF SPROCKET FEED PRINTERS			
365. Paper Out Bail	1-62		
366. Line Feed Detent Lever	1-62		
367. Paper Out Bail Spring	1-62		
368. Vertical Link Eccentric	1-62		
369. Switch Mounting Plate	1-62		
END-OF-LAST-FORM INDICATING MECHANISM MOUNTED ON COVER OF SPROCKET FEED PRINTERS			
370. Contact Gap Spring	1-63		

LINE AND SELECTOR CIRCUITS  
CLOSING JACK ADJUSTMENTS

\*Supplement to: Bulletin 138, Adjustments of the  
Type Bar Page Printer (Model 15)  
and  
Bulletin 147, Adjustments of the  
Single Magnet Reperforator

Contact Gap Adjustments

A. When the jack plunger is held flush with the relay connection block mounting plate, there should be a gap of .010" to .015" between the contact points of No. 3 and No. 4 contact springs. See Figure 1-B.

Adjust by bending No. 3 contact spring.

B. When the jack plunger is held flush with the relay connection block mounting plate there should be .020" to .025" clearance between the contact points of No. 1 and No. 2 contact springs. See Figure 1-B.

Adjust by bending No. 2 contact spring.

Contact Spring Tension Adjustment

When an 8 oz. scale is hooked to contact springs No. 1 or No. 4 at right angles to the springs it should require a pull of 5 to 7 ozs. to separate the contact points of contact springs No. 1 and 2 or of contact springs No. 3 and 4 respectively. See Figure 1-A.

Adjust by bending No. 1 and No. 4 contact springs.

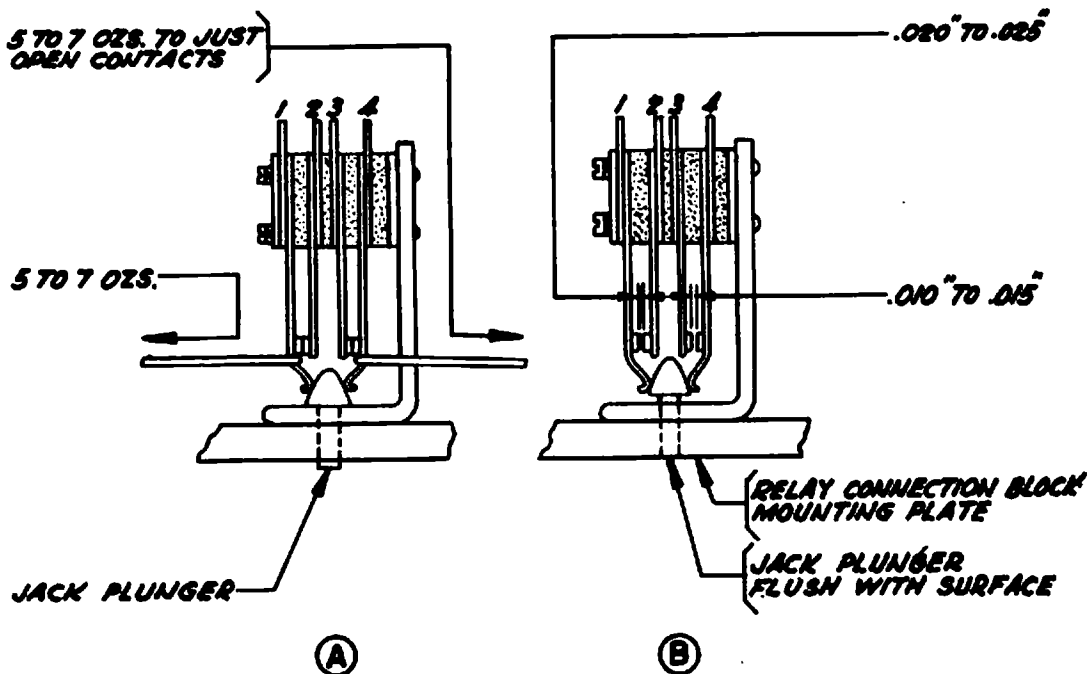


FIGURE 1